

Product Spec. Sheet


Diamond Series- Spring Arm











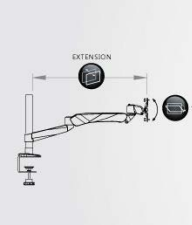
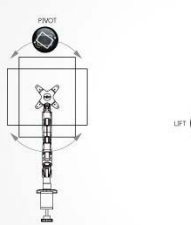
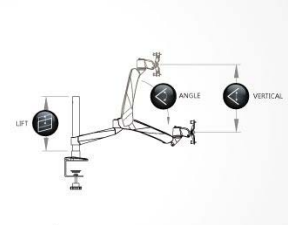

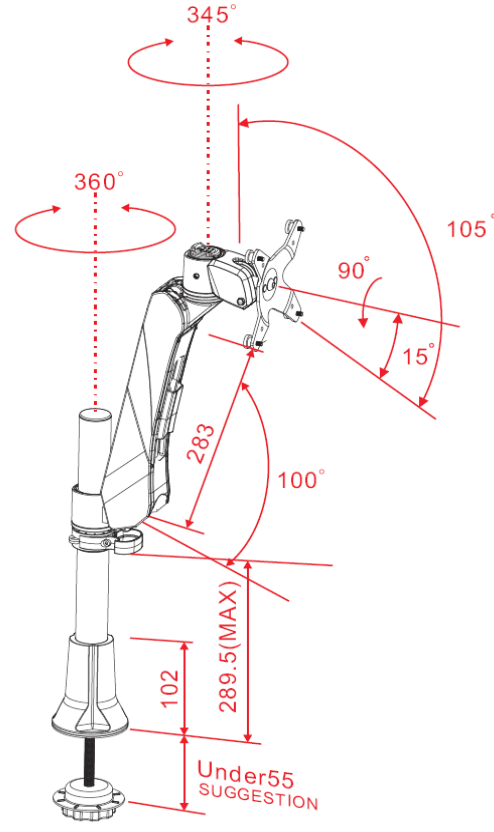
EM34111

Grommet Desk Mount LCD Monitor Arm

Quick Install & Dismount



| | |
|---------------------------------------|---|
| Product Name | Diamond Series Spring Arm |
| Model Number (color) | EM34111 (Silver Grey) |
| Product Includes | Spring Arm, Grommet desk Mount Base (Pole Length :302mm) Monitor Bracket |
| Attachment Options |  Lock for Security |
| Product Dimens. | Product : L208xW136xH540 mm Weight : 2.5Kg Color Box : L208*W136*H540MM Weight : 3.2Kg |
| Units per Master Carton | 4pcs |
| Shipping Master Carton Dimens. | Carton : L555*W301*H441 mm |
| Shipping Weight | N.W.:13Kg G.W.:14Kg |
| Units per Pallet | 96pcs |
| Warranty | 14 Months |
| Weight Capacity | 2Kg-9Kg (4.4-19.8lbs) almost any VESA compliant monitor up to 30" |
| Country of Origin | Taiwan |

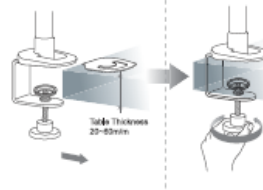
| | |
|-------------------|---|
| Features | <ol style="list-style-type: none"> 1. Elegant, Stylish and Ergonomic design with high performance 2. Wide Angle and height range for comfortable view position. 3. Swift Movement with easy adjustment. 4. 3 quick mode release function as Pivot stand, Swivel or Spring Arm. 5. Easily do install and dismount. 6. Aluminum alloy and metal material, strong and safety. 7. Internal cable management routed cables neatly under arm. 8. Space saving. 9. A considerate Tool fixed design, no more worrying tool of placement. 10. VESA MIS-D 75x75/100x100mm |
| Tech Specs | <div style="display: flex; justify-content: space-around; align-items: flex-end;"> <div style="text-align: center;">  VESA 0-200mm </div> <div style="text-align: center;">  LIFT 0-200mm </div> <div style="text-align: center;">  ANGLE 100° </div> <div style="text-align: center;">  PIVOT 360° </div> <div style="text-align: center;">  SWIVEL 360° </div> <div style="text-align: center;">  PAN 240° </div> <div style="text-align: center;">  TILT 105° </div> <div style="text-align: center;">  EXTENSIO 0-330mm </div> <div style="text-align: center;">  VERTICAL 0-270mm </div> <div style="text-align: center;">  Wt.Load 2-9Kg </div> </div> <div style="display: flex; justify-content: space-around; margin-top: 10px;">     </div> |
| Drawing |  <p style="text-align: center; color: red;">Untis : mm</p> |



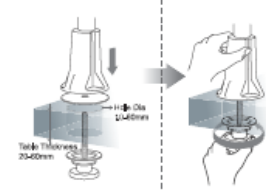
71H016135-015

1 Installation Method of Mount Type (夾座安裝方法)

A C-Clamp (C型夾)

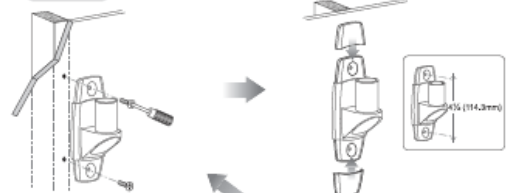


B Grommet (穿桌夾)



C Wall Mount (壁掛型)

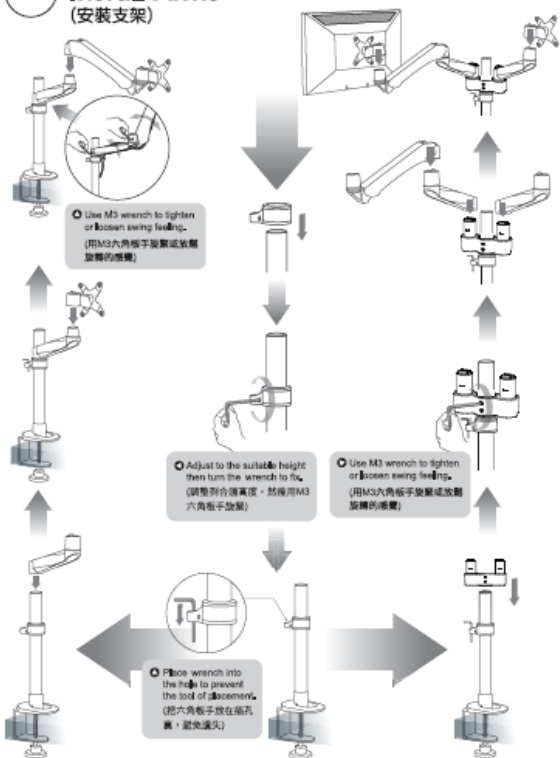
Wood (木質壁)



Concrete (水泥壁)



2 Install Arms (安裝支架)



3 Install Monitors (安裝螢幕)

