












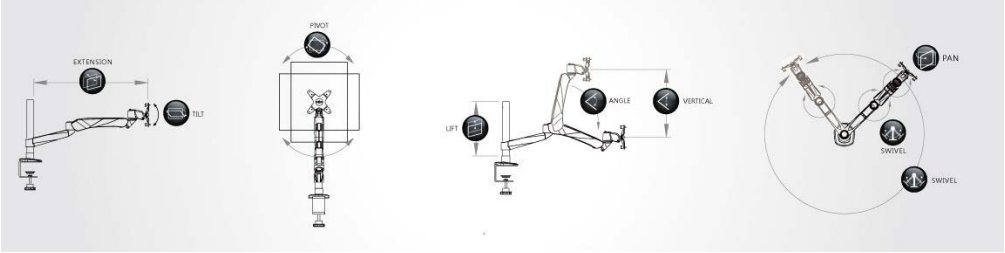
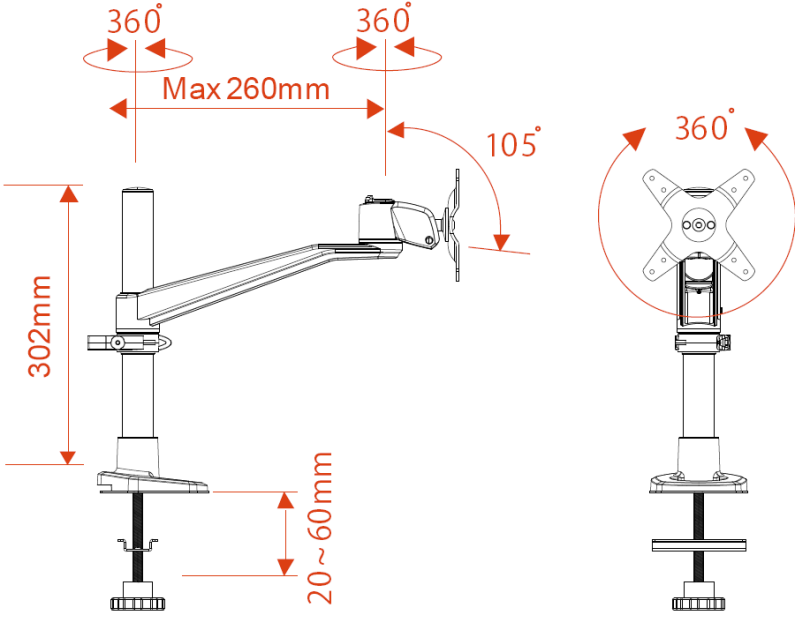
# Product Spec. Sheet

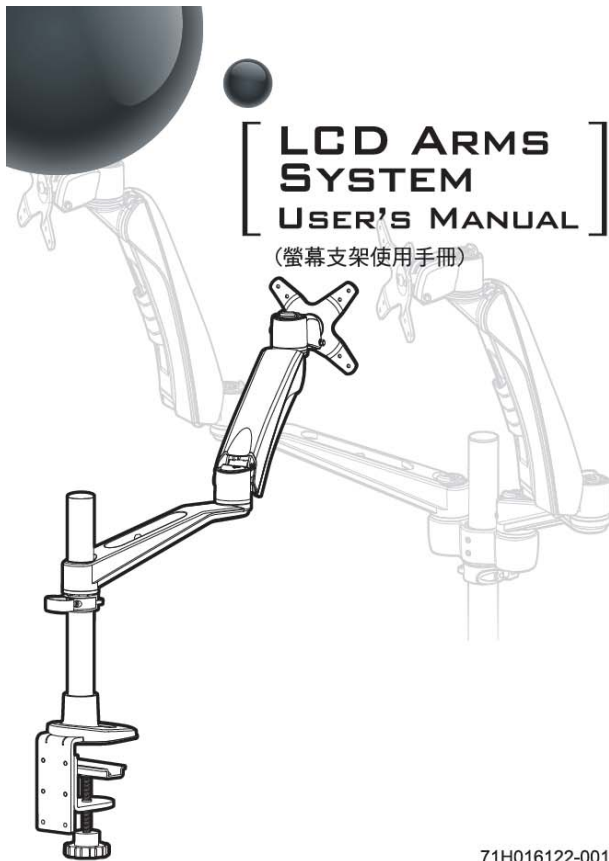
## Robot Serials- 1 Monitor Swivel Arm

Grommet Type Monitor Arm EM22131



Product Name	Robot Serials- 1 Monitor Swivel Arm
Model Number (color)	EM22131 (Silver Grey)
Product Includes	Swivel Arm, Grommet (Pole Length : 302mm), Desk Mount Base, Monitor Bracket
Attachment Options	 Lock for Security
Product Dimension	White Box: L224*W133*H465MM N. W.: 2 KG
Units per Master Carton	6 Pcs
Shipping Master Carton Dimension	L702*W480*H290 mm
Shipping Weight	N.W.:12Kg G.W.:13Kg
Units per Pallet	126 Pcs
Warranty	14 Months
Weight Capacity	≤ 14Kg (30.8 lbs) almost any VESA compliant monitor up to 30"
Country of Origin	Taiwan

<b>Features</b>	<ol style="list-style-type: none"> <li>1. Elegant, Stylish and Ergonomic design with high performance</li> <li>2. Wide Angle and height range for comfortable view position.</li> <li>3. Swift Movement with easy adjustment.</li> <li>4. 3 quick mode release function as Pivot stand, Swivel or Spring Arm.</li> <li>5. Easily do install and dismount.</li> <li>6. Aluminum alloy and metal material, strong and safety.</li> <li>7. Internal cable management routed cables neatly under arm.</li> <li>8. Space saving.</li> <li>9. Quick release cable management design with no tools require for height adjustment on pole.</li> <li>10. VESA MIS-D 75x75/100x100mm</li> </ol>
<b>Tech Specs</b>	<div style="display: flex; justify-content: space-around; align-items: flex-end;"> <div style="text-align: center;">   <b>VESA</b>  200mm </div> <div style="text-align: center;">   <b>LIFT</b>  0° </div> <div style="text-align: center;">   <b>ANGLE</b>  360° </div> <div style="text-align: center;">   <b>PIVOT</b>  360° </div> <div style="text-align: center;">   <b>SWIVEL</b>  360° </div> <div style="text-align: center;">   <b>PAN</b>  360° </div> <div style="text-align: center;">   <b>TILT</b>  105° </div> <div style="text-align: center;">   <b>EXTENSIO</b>  260mm </div> <div style="text-align: center;">   <b>VERTICAL</b>  0 </div> <div style="text-align: center;">   <b>Wt.Load</b>  ≤14Kg </div> </div> <div style="text-align: center; margin-top: 10px;">  </div>
<b>Drawing</b>	<div style="text-align: center;">  </div> <p style="text-align: center; margin-top: 20px;">EM22131 Product Line Drawing, Unit:mm</p>

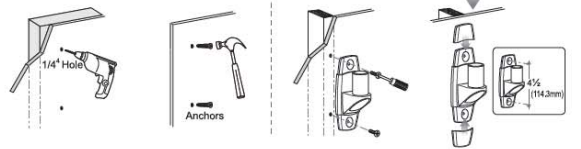


## 1 Installation Method of Mount Type (夾座安裝方法)

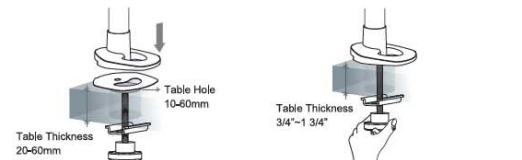
Wall Mount(壁掛型)

Concrete(水泥壁)

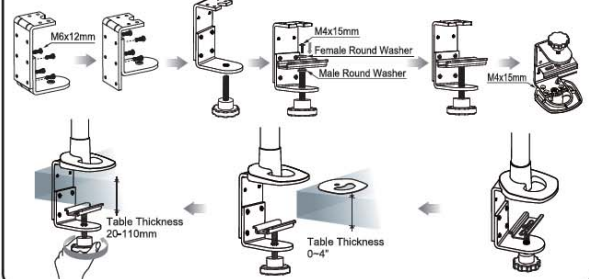
Wood(木質牆)



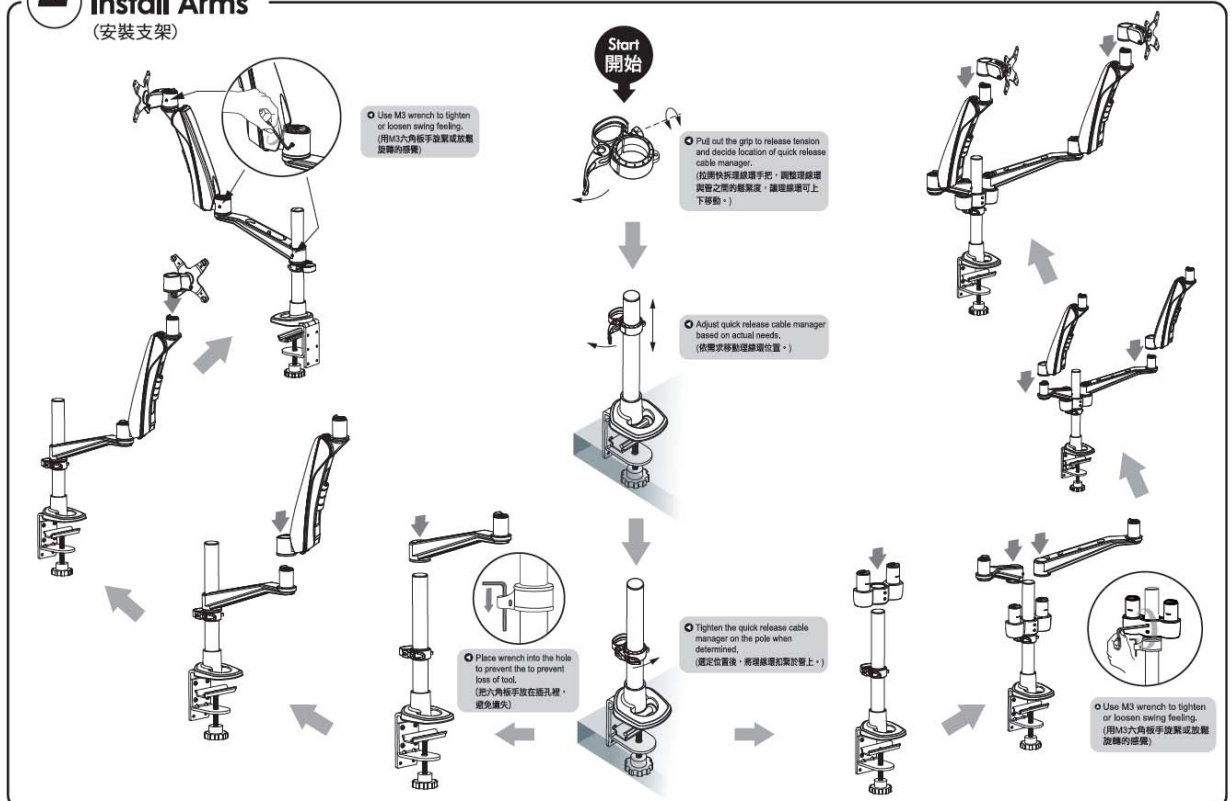
Grommet(穿桌型)



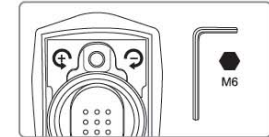
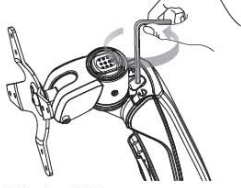
2 in 1 for C-Clamp (二合一型)



## 2 Install Arms (安裝支架)



### 3 Install Monitors (安裝螢幕)

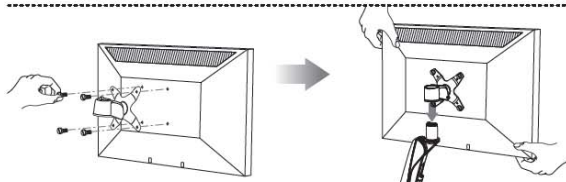


- To Increase Loading – Turn counter-clockwise  
(逆時針旋轉增加荷重)
- To Decrease Loading – Turn clockwise  
(順時針旋轉減低荷重)

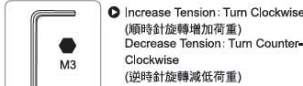
#### ⚠ Cautions (注意)

Before putting monitor onto the arm, please notice the weight of monitor. Our system is set at 3.5Kg that means the arm can sustain weight from 2.5-4.5Kg. If the monitor's weight is more than 4.5Kg or less than 2.5Kg, please use M6 wrench to adjust the loading.

(安裝螢幕前，請先查看螢幕重量。本系統出廠前，設定為承重2.5Kg-4.5Kg的螢幕，如螢幕重量在此範圍內，直接安裝即可，若重量超過4.5Kg或低於2.5Kg，請使用M6六角板手調整或調鬆致合適承重。)



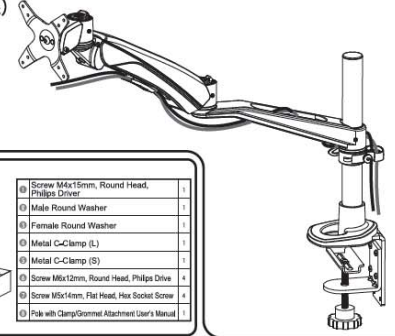
- Use M3 wrench to tighten or loosen swing feeling.  
(用M3六角板手調整或放鬆旋轉的接觸)



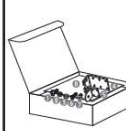
- Increase Tension: Turn Clockwise  
(順時針旋轉增加荷重)
- Decrease Tension: Turn Counter-Clockwise  
(逆時針旋轉減低荷重)

- If monitor does not stay in place or movement is stiff, please use wrench to increase or decrease tension until motion is equal.  
(調整螢幕俯角或仰角時，如感覺太緊或太鬆，請使用M3六角板手調整。)

### 4 Route Cables (理線)



#### Service Kit



①	Screw M4x15mm, Round Head, Phillips Driver	1
②	Male Round Washer	1
③	Female Round Washer	1
④	Metal C-Clamp (L)	1
⑤	Metal C-Clamp (S)	1
⑥	Screw M4x12mm, Round Head, Phillips Drive	1
⑦	Screw M5x14mm, Flat Head, Hex Socket Screw	1
⑧	Pole with Clamp/Grommet Attachment User's Manual	1

#### 保固條款 (Scope of Guarantee)

- 客戶滿意是我們努力追求的目標，為維持提供客戶最完善的售後服務及關於消費者的權利，請仔細閱讀說明書內的資訊。
- 為提高服務效率，請在維修保固及換貨時提供購買發票或本保證書。
- 在購買商品時，請務必填寫購買日並加蓋店章，如有記載遺漏，會造成在保固期限內無法免費維修。
- 如超過保固期，消費者必須負擔零件及維修服務費。
- 請按說明書內之規格限制，正常使用本產品，如使用者使用超過產品規格之承受重量，造成產品受損故障，雖在保固期內，將不負責維修或消費者必須負擔零件及維修服務費。

- Consumer's satisfaction with our products is the goal that we have been heading for. To assure the best after-sale service to consumers and ensure consumer's rights, please read carefully the information stated in the instruction manual.
- To enhance our service efficiency, please provide purchase invoice or warranty card if request for product maintenance or merchandise exchange.
- The actual date of purchase and affixed seal by distributor on warranty card is required. Free after-sale service will not be guaranteed even under warranty period should any incomplete purchase information.
- The costs of components and maintenance will be at consumer's expense should the product be invalid for warranty period.
- Please refer to specification limitation specified in the instruction manual for correct usage. Even under the warranty period, this warranty does not cover the problems or damage resulting from the loading weight that exceeds the specification specified in the instruction manual; and the costs of components and maintenance will be at consumer's expense.

#### Warning:

Please lift arm up to highest position while removing the monitor. The monitor arm could bounce upward to cause personal injury when the weight of monitor is removed.











卸下螢幕時，請將支架移到最上端，因為維持平衡的螢幕重量被移開時，支架會反彈，可能會造成傷害。



### Supplied Parts and Hardwares (包裝內部品及五金件)

Model 型號	EM22114	EM22131	EM22136	EM23114	EM23131	EM23136	EM23231	EM23236	EM24031	EM24036	EM24114	EM24131	EM24136	EM25031	EM25036	EM25114	EM25131	EM25201	EM25206	EM25214	EM25231	EM25236
Parts 零件																						
Wall Mount (牆座)	•	•	•	•	•	•	•	•	•	•	•	•	•	•	•	•	•	•	•	•	•	•
2 in 1 service kit (組合1)		•	•	•	•	•	•	•	•	•	•	•	•	•	•	•	•	•	•	•	•	•
Grommet (穿桌夾座)	•	•	•	•	•	•	•	•	•	•	•	•	•	•	•	•	•	•	•	•	•	•
M6 Wrench (M6六角板手)											•	•	•	•	•	•	•	•	•	•	•	•
M3 Wrench (M3六角板手)	•	•	•	•	•	•	•	•	•	•	•	•	•	•	•	•	•	•	•	•	•	•
EVA Cushion (墊墊)	•	•	•	•	•	•	•	•	•	•	•	•	•	•	•	•	•	•	•	•	•	•
Spring Arm (懸臂)											•	•	•	•	•	•	•	•	•	•	•	•
Swivel Arm (延伸臂)	•	•	•	•	•	•	•	•	•	•	•	•	•	•	•	•	•	•	•	•	•	•
Monitor Mount (螢幕固定座)	•	•	•	•	•	•	•	•	•	•	•	•	•	•	•	•	•	•	•	•	•	•
Hand Screw x4 (手鎖 x4)	•	•	•	•	•	•	•	•	•	•	•	•	•	•	•	•	•	•	•	•	•	•
Quick Release Cable Manager (快速理線器)	•	•	•	•	•	•	•	•	•	•	•	•	•	•	•	•	•	•	•	•	•	•
Dual Stand (雙支腳)				•	•	•												•	•	•	•	•

### Features and Specification (功能特性)

										
EM22114	M5-0 (75x75/100x100)	0mm	0°	360°	180°	360°	105°	260mm	0mm	≤14kg
EM22131		200mm	0°	360°	360°	360°	105°	260mm	0mm	≤14kg
EM22136		200mm	0°	360°	360°	360°	105°	260mm	0mm	≤14kg
EM23114		0mm	0°	360°	360°	360°	105°	520mm	0mm	≤14kg
EM23131		200mm	0°	360°	360°	360°	105°	520mm	0mm	≤14kg
EM23136		200mm	0°	360°	360°	360°	105°	520mm	0mm	≤14kg
EM23214		0mm	0°	360°	360°	360°	105°	520mm	0mm	≤30kg
EM23231		160mm	0°	360°	360°	360°	105°	520mm	0mm	Each Arm's Max Loading 50kg
EM23236		160mm	0°	360°	360°	360°	105°	520mm	0mm	Each Arm's Max Loading 50kg
EM24031		0mm	100°	360°	360°	240°	105°	330mm	270mm	2~9kg
EM24036		0mm	100°	360°	360°	240°	105°	330mm	270mm	2~9kg
EM24114		0mm	100°	360°	180°	240°	105°	330mm	270mm	2~9kg
EM24131		200mm	100°	360°	360°	240°	105°	330mm	270mm	2~9kg
EM24136		200mm	100°	360°	360°	240°	105°	330mm	270mm	2~9kg
EM25031		0mm	100°	360°	360°	240°	105°	590mm	270mm	2~9kg
EM25036		0mm	100°	360°	360°	240°	105°	590mm	270mm	2~9kg
EM25114	0mm	100°	360°	360°	240°	105°	590mm	270mm	2~9kg	
EM25131	200mm	100°	360°	360°	240°	105°	590mm	270mm	2~9kg	
EM25136	200mm	100°	360°	360°	240°	105°	590mm	270mm	2~9kg	
EM25201	0mm	100°	360°	360°	240°	105°	590mm	270mm	Each Arm's Max Loading 50kg	
EM25206	0mm	100°	360°	360°	240°	105°	590mm	270mm		
EM25214	0mm	100°	360°	360°	240°	105°	590mm	270mm		
EM25231	160mm	100°	360°	360°	240°	105°	590mm	270mm		
EM25236	160mm	100°	360°	360°	240°	105°	590mm	270mm		