










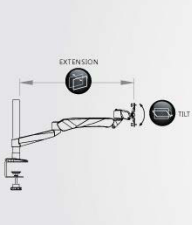
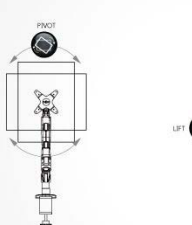
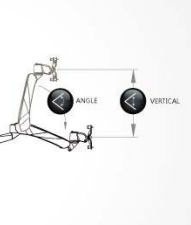
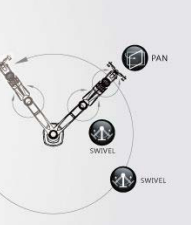
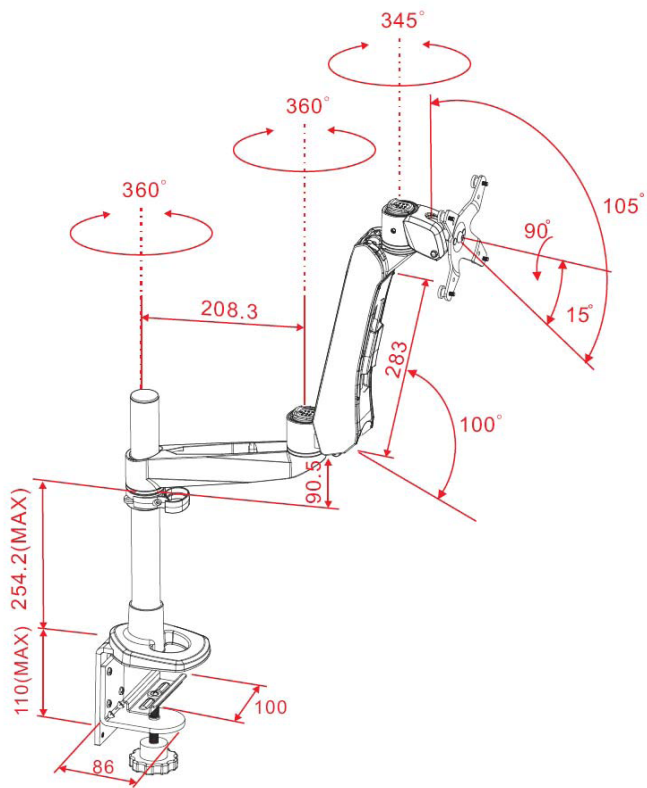


Product Spec. Sheet

Diamond Series- 1 Monitor 2 Joint Spring Arm 2 in1 (C-Clamp + Grommet) Type Monitor Arm EM35136



Product Name	Diamond Series- 1 Monitor 2 Joint Spring Arm
Model Number (color)	EM35136 (Silver Grey)
Product Includes	Spring Arm, extension Swivel Arm, 2 in1 (Clamp + Grommet) Pole Length (302mm) Desk Mount Base, Monitor Bracket
Attachment Options	 Lock for Security
Product Dimension	L290*W136*H462 mm Weight : 4.3Kg
Units per Master Carton	5 pcs
Shipping Master Carton Dimension	L706*W475*H312MM
Shipping Weight	N.W.:21.5 Kg G.W.:22.5 Kg
Units per Pallet	90 pcs
Warranty	14 Months
Weight Capacity	≤2Kg~9Kg (≤4.4~19.8lbs) almost any VESA compliant monitor up to ≤30"
Country of Origin	Taiwan

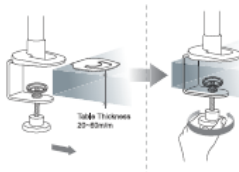
Features	<ol style="list-style-type: none"> 1. Elegant, Stylish and Ergonomic design with high performance 2. Wide Angle and height range for comfortable view position. 3. Swift Movement with easy adjustment. 4. 3 quick mode release function as Pivot stand, Swivel or Spring Arm. 5. Easily do install and dismount. 6. Aluminum alloy and metal material, strong and safety. 7. Internal cable management routed cables neatly under arm. 8. Space saving. 9. A considerate Tool fixed design, no more worrying tool of placement. 10. VESA MIS-D 75x75/100x100mm
Tech Specs	<div style="display: flex; justify-content: space-around; align-items: flex-start;"> <div style="text-align: center;">  VESA 75x75/ 100x100 </div> <div style="text-align: center;">  LIFT 200mm </div> <div style="text-align: center;">  ANGLE 100° </div> <div style="text-align: center;">  PIVOT 360° </div> <div style="text-align: center;">  SWIVEL 360° </div> <div style="text-align: center;">  PAN 240° </div> <div style="text-align: center;">  TILT 105° </div> <div style="text-align: center;">  EXTENSIO 540mm </div> <div style="text-align: center;">  VERTICAL 270mm </div> <div style="text-align: center;">  Wt.Load ≤ 2-9Kg </div> </div> <div style="display: flex; justify-content: space-around; margin-top: 10px;">     </div>
Drawing	 <p style="text-align: center; color: red;">Untis : mm</p> <h2 style="text-align: center;">EM35136 Product line Drawing</h2>



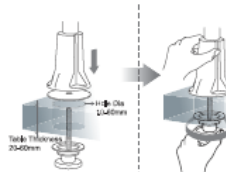
71H016135-015

1 Installation Method of Mount Type (夾座安裝方法)

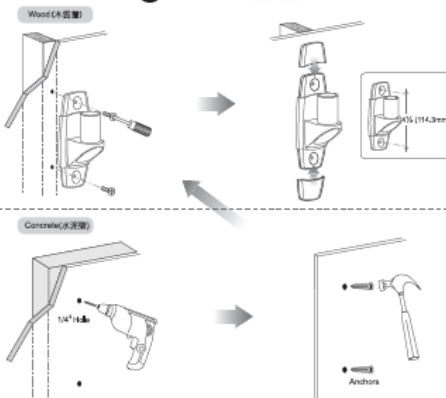
A C-Clamp (C型夾)



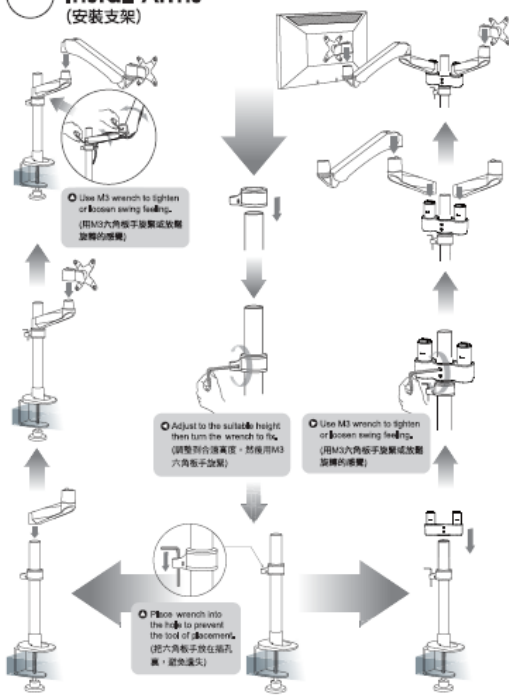
B Grommet (穿桌夾)



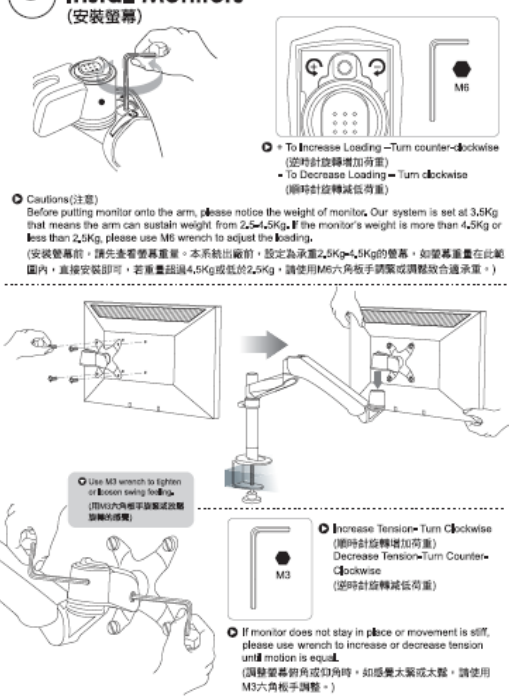
C Wall Mount (壁掛型)



2 Install Arms (安裝支架)



3 Install Monitors (安裝螢幕)













4 Route Cables (理線)

④

[illegible]

①

										
	VESA	LIFT	ANGLE	PIST	SWIVEL	PAN	TILT	EXTENSION	VERTICAL	W/Load
EM31111	WFO (75x100x100)	200mm	0	360°	0	360°	105°	0	0	≤14kg
EM31116	WFO (75x100x100)	200mm	0	360°	0	360°	105°	0	0	≤14kg
EM31136	WFO (75x100x100)	200mm	0	360°	0	360°	105°	0	0	≤14kg
EM31114	WFO (75x100x100)	0	0	360°	0	180°	105°	0	0	≤14kg
EM32111	WFO (75x100x100)	200mm	0	360°	360°	360°	105°	210mm	0	≤14kg
EM32116	WFO (75x100x100)	200mm	0	360°	360°	360°	105°	210mm	0	≤14kg
EM32136	WFO (75x100x100)	200mm	0	360°	360°	360°	105°	210mm	0	≤14kg
EM32114	WFO (75x100x100)	0	0	360°	180°	360°	105°	210mm	0	≤14kg
EM33111	WFO (75x100x100)	200mm	0	360°	360°	360°	105°	420mm	0	≤14kg
EM33116	WFO (75x100x100)	200mm	0	360°	360°	360°	105°	420mm	0	≤14kg
EM33136	WFO (75x100x100)	200mm	0	360°	360°	360°	105°	420mm	0	≤14kg
EM33114	WFO (75x100x100)	0	0	360°	360°	360°	105°	420mm	0	≤14kg
EM34111	WFO (75x100x100)	200mm	100°	360°	360°	240°	105°	330mm	270mm	2-9kg
EM34116	WFO (75x100x100)	200mm	100°	360°	360°	240°	105°	330mm	270mm	2-9kg
EM34136	WFO (75x100x100)	200mm	100°	360°	360°	240°	105°	330mm	270mm	2-9kg
EM34114	WFO (75x100x100)	0	100°	360°	180°	240°	105°	330mm	270mm	2-9kg
EM34211	WFO (75x100x100)	0	100°	360°	360°	240°	105°	330mm	270mm	2-9kg
EM34216	WFO (75x100x100)	0	100°	360°	360°	240°	105°	330mm	270mm	2-9kg
EM34036	WFO (75x100x100)	0	100°	360°	360°	240°	105°	330mm	270mm	2-9kg
EM35111	WFO (75x100x100)	200mm	100°	360°	360°	240°	105°	540mm	270mm	2-9kg
EM35116	WFO (75x100x100)	200mm	100°	360°	360°	240°	105°	540mm	270mm	2-9kg
EM35136	WFO (75x100x100)	200mm	100°	360°	360°	240°	105°	540mm	270mm	2-9kg
EM35114	WFO (75x100x100)	0	100°	360°	360°	240°	105°	540mm	270mm	2-9kg
EM35121	WFO (75x100x100)	0	100°	360°	360°	240°	105°	540mm	270mm	2-9kg
EM35126	WFO (75x100x100)	0	100°	360°	360°	240°	105°	540mm	270mm	2-9kg
EM35136	WFO (75x100x100)	0	100°	360°	360°	240°	105°	540mm	270mm	2-9kg
EM35114	WFO (75x100x100)	160mm	0	360°	360°	360°	105°	420mm	0	Not Meets ≤20kg
EM35121	WFO (75x100x100)	160mm	0	360°	360°	360°	105°	420mm	0	Not Meets ≤20kg
EM35126	WFO (75x100x100)	160mm	0	360°	360°	360°	105°	420mm	0	Not Meets ≤20kg
EM35136	WFO (75x100x100)	160mm	0	360°	360°	360°	105°	420mm	0	Not Meets ≤20kg
EM35114	WFO (75x100x100)	160mm	100°	360°	360°	240°	105°	540mm	270mm	Each Arm ≤9kg
EM35121	WFO (75x100x100)	160mm	100°	360°	360°	240°	105°	540mm	270mm	Each Arm ≤9kg
EM35126	WFO (75x100x100)	160mm	100°	360°	360°	240°	105°	540mm	270mm	Each Arm ≤9kg
EM35136	WFO (75x100x100)	160mm	100°	360°	360°	240°	105°	540mm	270mm	Each Arm ≤9kg

保固條款 (Scope of Guarantee)

1. 買方購買產品時均應認明並注意，如欲轉售須將原廠商之保證書及關於此項權利之資料，一併移轉與獲准承購人所有。賣方不負責任因未遵守此項規定而產生之任何損失。
2. 依據保證書所載，應由賣方提供必要之技術服務及零件保證。
3. 在保證書有效內，倘有故障發生且已註明在內者，經查明屬實後，賣方應於合理時間內派遣人員修理或更換零件。
4. 本保證書係指下列之條件而訂：正字標記為憑、說明書內所列之保用期限、製造廠出品證明書、裝配圖樣及品質保證書。而在保用期間內，不含有其他條件，亦不得有延誤等及延期維修費。
- Consumer's satisfaction with our products is the goal that we have been heading for. To assure the best after-sale service to consumer and ensure consumer's rights, please read carefully the information stated in the instruction manual.
- To enhance our service efficacy, please provide invoice or warranty card if requested for product maintenance or maintenance exchange.
- The actual date of purchase and effect used by distributor on warranty card is required. Free after-sale services will not be guaranteed without proof of purchase from the manufacturer.
- The costs of components and maintenance will be at consumer's expense should the product is faulty for warranty period.
- Please refer to specification Instruction specified in the instruction manual for correct usage. Even under the warranty period, this warrant does not cover the problems or damage resulting from the loading weight that exceeds the specification specified in the instruction manual.

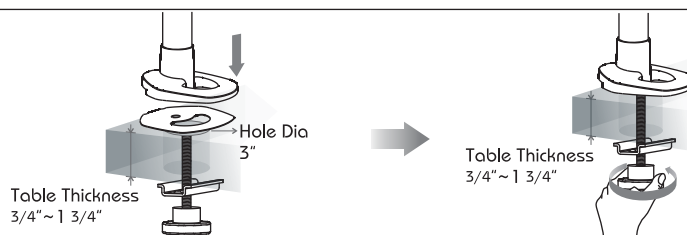
Please lift arm up to highest position while removing the monitor. The monitor arm could bounce upward to cause personal injury when the weight of monitor is removed.

卸下螢幕時，請將支架移到最上端，因為維持平衡的螢幕重量被移開時，支架會反彈，可能會造成傷害。



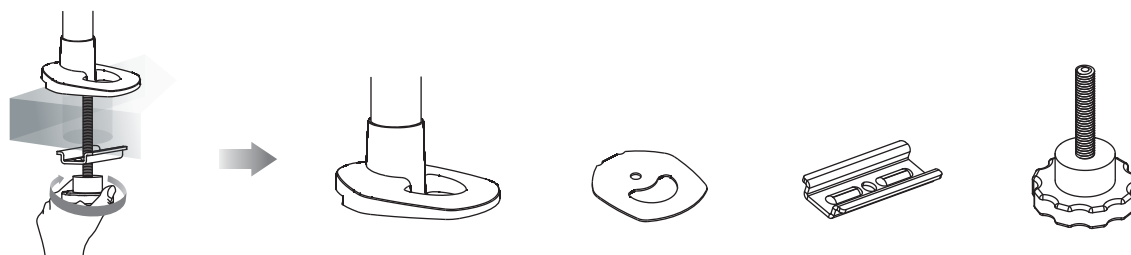
Pole with Clamp/Grommet Attachment User's Manual

Grommet Type

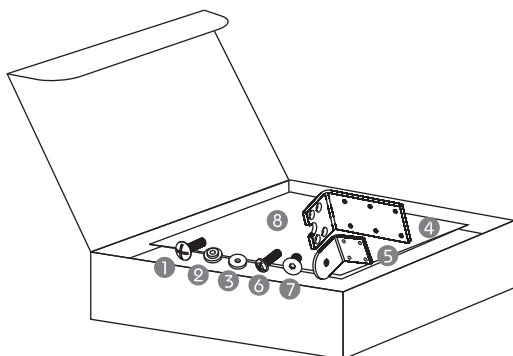


Clamp Type

Step 1 ➔ Unscrew Hand-Turn Screw and separate Hand-Turn Screw and Long Metal Plate from the Mount.

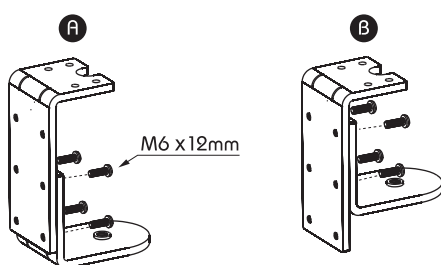


Service Kit



①	Screw M4x15mm, Round Head, Philips Drive	1
②	Male Round Washer	1
③	Female Round Washer	1
④	Metal C Clamp(L)	1
⑤	Metal C Clamp(S)	1
⑥	Screw M6x12mm, Round Head, Philips Drive	4
⑦	Screw M5x14mm, Flat Head, Hex Socket Screw	4
⑧	Pole with Clamp/Grommet Attachment User's Manual	1

Step 2 ➔ Depends on the desk thickness, assemble 2 pieces of metal clamp at suitable screw holes with 4 screws (M5x15mm, round head, Philips Drive).



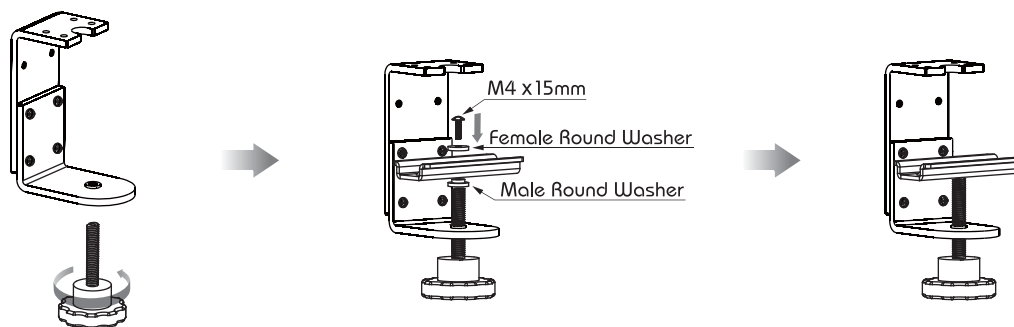
Remark

Desk thickness >50mm(1.97"), refer to chart A left.
Desk thickness <50mm(1.97"), refer to chart B left.

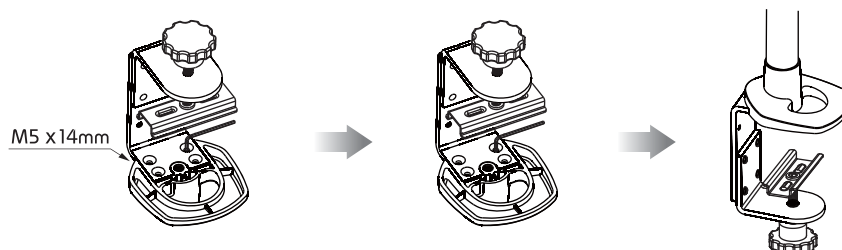
Step 3 ➔ Get Screw (M4x15mm, Round Head, Philips Drive), Male & Female Round Washers from Service Kit.



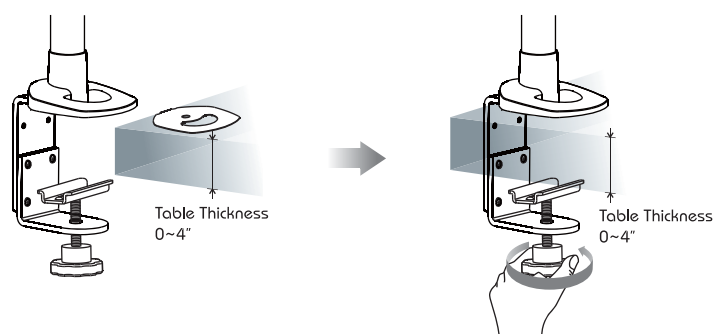
Step 4 Assemble Hand-Turn Screw with C Clamp.



Step 5 Assemble C Clamp with Mount by driving 4 Screws M5x14mm, flap head, Hex Socket Screws.



Step 6 Stick EVA cushion to mount bottom. Mount assembly is completed for installation onto desk.



Step 7 Install Mount with Swivel Arm, Spring Arm, and Monitor Bracket.

Parts & Hardware

Parts	QTY	Remark
Mount with Pole, Pole Cap, and Adjustment Ring	1	No Adjustment Ring on 82mm Clamp Mount
Hand-Turn Screw(Attached with Mount)	1	
EVA Cushion (Attached with Mount)	1	
Long Metal Plate(Attached with Mount)	1	
Screw M4x15mm, Round Head, Philips Drive	1	Inside Service Kit
Male Round Washer	1	Inside Service Kit

Parts	QTY	Remark
Female Round Washer	1	Inside Service Kit
Metal C Clamp(L)	1	Inside Service Kit
Metal C Clamp(S)	1	Inside Service Kit
Screw M6x12mm, Round Head, Philips Drive	4	Inside Service Kit
Screw M5x14mm, Flat Head, Hex Socket Screw	4	Inside Service Kit
Pole with Clamp/Grommet Attachment User's Manual	1	Inside Service Kit

Tool

Tools Item	QTY	Remark
M3 Wrench	1	Inside Service Kit of Monitor Bracket
#3 Philips Screw Driver	1	Provided by users