


# Product Spec. Sheet











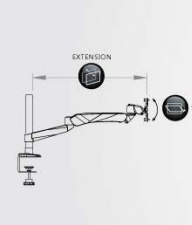
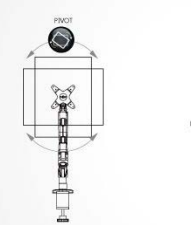
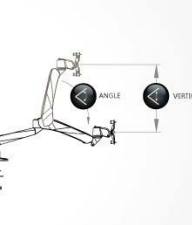
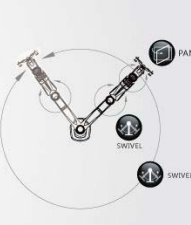
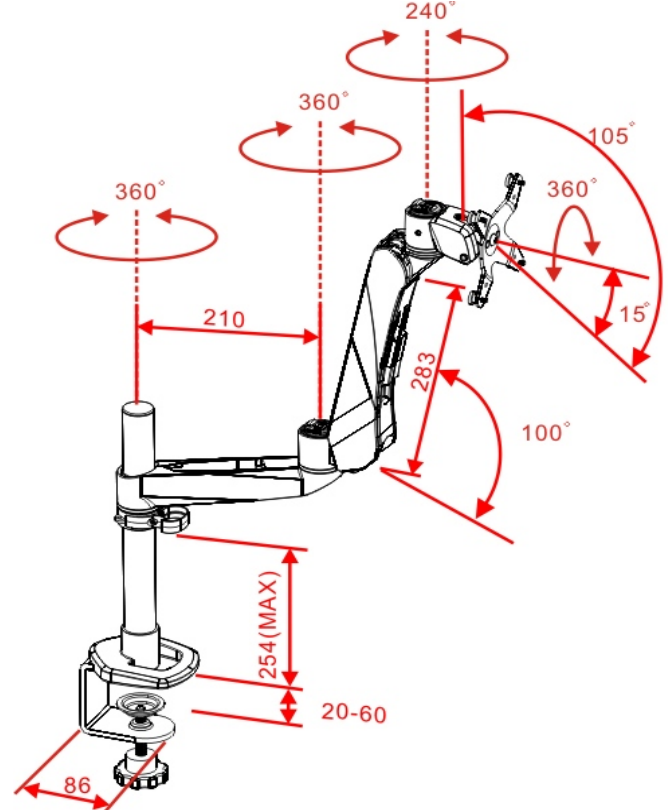
## Diamond Series- 2-Joint Spring Arm

EM35116

C-Clamp Desk Mount LCD Monitor Arm



<b>Product Name</b>	Diamond Series Spring Arm
<b>Model Number (color)</b>	EM35116 (Silver Grey)
<b>Product Includes</b>	Spring Arm, extension Swivel Arm, C-Clamp desk Mount Base (Pole Length : 302mm), Monitor Bracket
<b>Attachment Options</b>	 Lock for Security
<b>Product Dimens.</b>	Product : L480xW114xH760 mm Weight : 3.2Kg White Box : L290xW136xH462 mm Weight :4.2Kg
<b>Units per Master Carton</b>	5pcs
<b>Shipping Master Carton Dimens.</b>	Carton : L706x W475xH312 mm
<b>Shipping Weight</b>	N.W.:21Kg G.W.:22.4Kg
<b>Units per Pallet</b>	90pcs
<b>Warranty</b>	14 Months
<b>Weight Capacity</b>	2Kg-9Kg (4-20lbs) almost any VESA compliant monitor up to 30"
<b>Country of Origin</b>	Taiwan

<b>Features</b>	<ol style="list-style-type: none"> <li>1. Elegant, Stylish and Ergonomic design with high performance</li> <li>2. Wide Angle and height range for comfortable view position.</li> <li>3. Swift Movement with easy adjustment.</li> <li>4. 3 quick mode release function as Pivot stand, Swivel or Spring Arm.</li> <li>5. Easily do install and dismount.</li> <li>6. Aluminum alloy and metal material, strong and safety.</li> <li>7. Internal cable management routed cables neatly under arm.</li> <li>8. Space saving.</li> <li>9. A considerate Tool fixed design, no more worrying tool of placement.</li> <li>10. VESA MIS-D 75x75/100x100mm</li> </ol>
<b>Tech Specs</b>	<div style="display: flex; justify-content: space-around; align-items: flex-end;"> <div style="text-align: center;">   <b>VESA</b>  0-200mm </div> <div style="text-align: center;">   <b>LIFT</b>  0-200mm </div> <div style="text-align: center;">   <b>ANGLE</b>  100° </div> <div style="text-align: center;">   <b>PIVOT</b>  360° </div> <div style="text-align: center;">   <b>SWIVEL</b>  360° </div> <div style="text-align: center;">   <b>PAN</b>  240° </div> <div style="text-align: center;">   <b>TILT</b>  105° </div> <div style="text-align: center;">   <b>EXTENSIO</b>  0-540mm </div> <div style="text-align: center;">   <b>VERTICAL</b>  0-270mm </div> <div style="text-align: center;">   <b>Wt.Load</b>  2-9Kg </div> </div> <div style="display: flex; justify-content: space-around; margin-top: 10px;">     </div>
<b>Drawing</b>	 <p style="text-align: center;">Unitis : mm</p> <p style="text-align: center;"><b>EM35116 Product line Drawing</b></p>

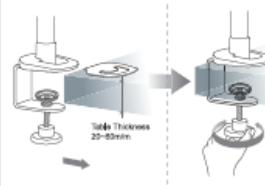
# **LCD ARM SYSTEM** **USER'S MANUAL**

(螢幕支架使用手冊)

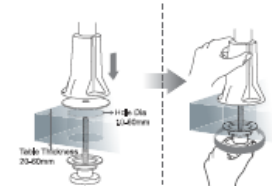
71H016135-015

## **1 Installation Method of Mount Type** (夾座安裝方法)

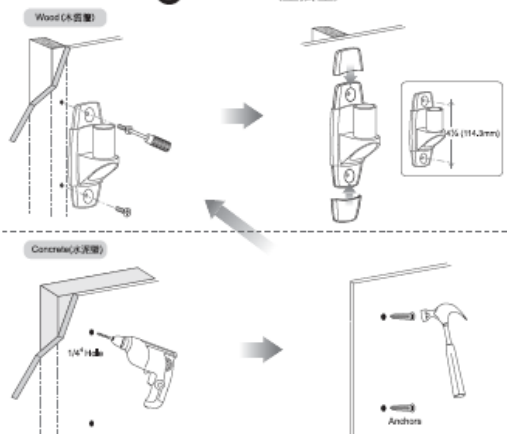
### **A C-Clamp (C型夾)**



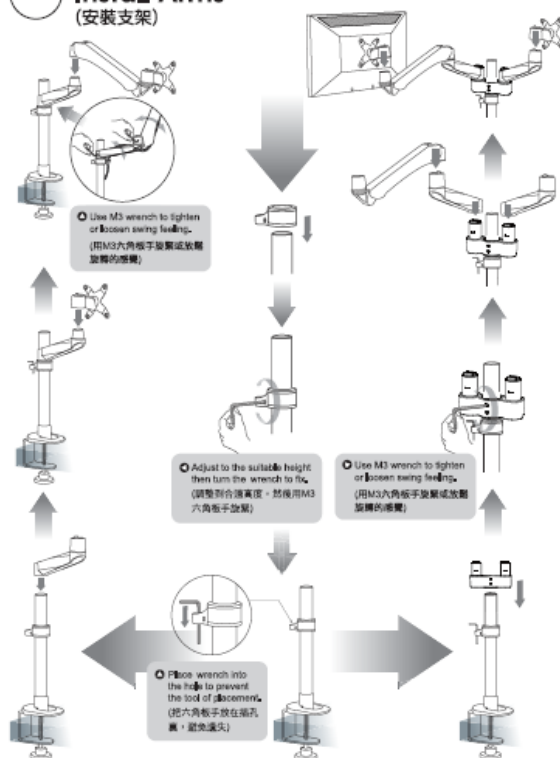
### **B Grommet (穿桌夾)**



### **C Wall Mount (壁掛型)**



## **2 Install Arms** (安裝支架)



## **3 Install Monitors** (安裝螢幕)

