












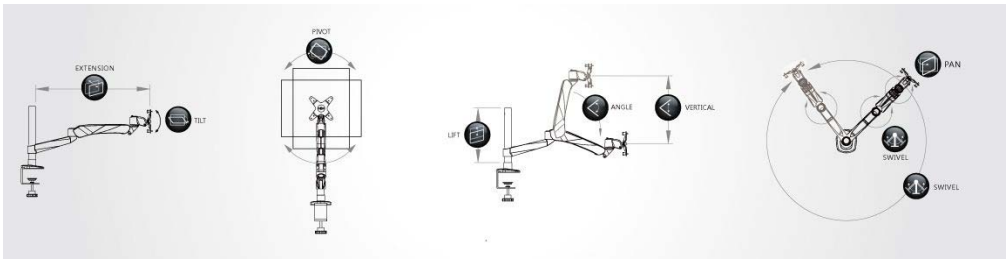
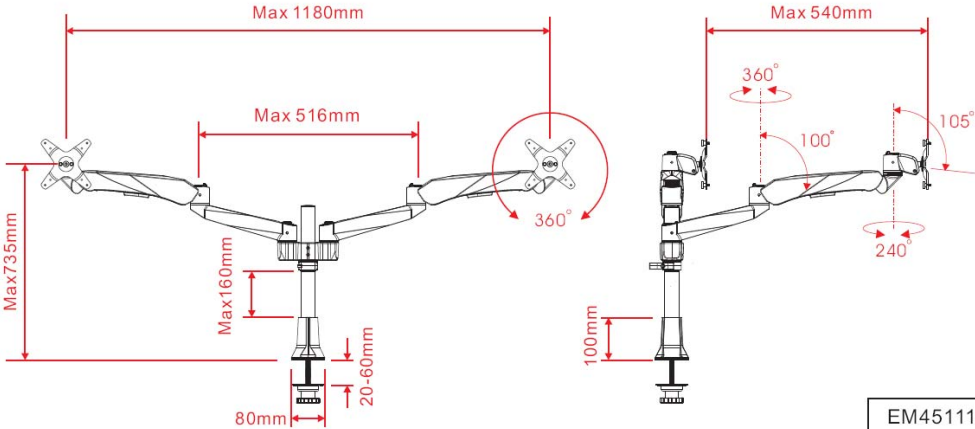
Product Spec. Sheet

Diamond Series- 2 Monitor 2Joint Spring Arm Grommet Desk Mount LCD Monitor Arm EM45111

Quick Install & Dismount



Product Name	Diamond Series- 2 Monitor 2Joint Spring Arm
Model Number (color)	EM45111 (Silver Grey)
Product Includes	2 Joint Spring Arm, Grommet desk Mount Base (Pole Length : 302mm), Dual Stand, Monitor Bracketx2
Attachment Options	 Lock for Security
Product Dimens.	L382*W136*H526mm Weight : 6.9 KG
Units per Master Carton	2 pcs
Shipping Master Carton Dimens.	L540*W297*H406 mm
Shipping Weight	N.W.:14Kg G.W.:15Kg
Units per Pallet	64 pcs
Warranty	14 Months
Weight Capacity	≤20Kg (44lbs) the max weight for single arm is ≤2Kg-9Kg (4.4-19.8lbs) almost any VESA compliant monitor up to 27"
Country of Origin	Taiwan

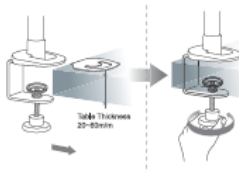
Features	<ol style="list-style-type: none">1. Elegant, Stylish and Ergonomic design with high performance2. Wide Angle and height range for comfortable view position.3. Swift Movement with easy adjustment.4. 3 quick mode release function as Pivot stand, Swivel or Spring Arm.5. Easily do install and dismount.6. Aluminum alloy and metal material, strong and safety.7. Internal cable management routed cables neatly under arm.8. Space saving.9. A considerate Tool fixed design, no more worrying tool of placement.10. VESA MIS-D 75x75/100x100mm
Tech Specs	<div><div> VESA</div><div> LIFT</div><div> ANGLE</div><div> PIVOT</div><div> SWIVEL</div><div> PAN</div><div> TILT</div><div> EXTENSIO</div><div> VERTICAL</div><div> Wt.Load</div></div> <div><div>160mm</div><div>100°</div><div>360°</div><div>360°</div><div>240°</div><div>105°</div><div>540mm</div><div>270 mm</div><div>≤20kg</div></div> <div></div>
Drawing	<div><div><div>Max 1180mm</div><div>Max 516mm</div><div>Max 735mm</div><div>Max 160mm</div><div>80mm</div><div>20-60mm</div><div>Max 540mm</div><div>360°</div><div>360°</div><div>100°</div><div>240°</div><div>105°</div><div>100mm</div></div></div> <div><div>EM45111</div><div>Unit:mm</div></div>



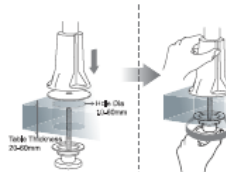
71H016135-015

1 Installation Method of Mount Type (夾座安裝方法)

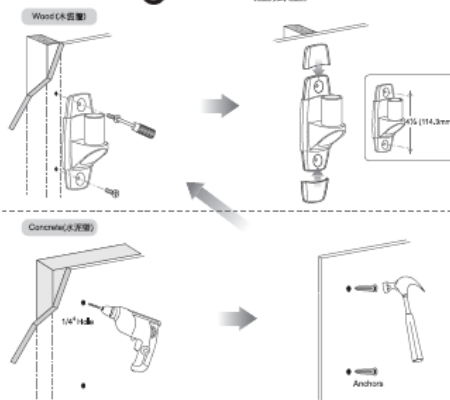
A C-Clamp (C型夾)



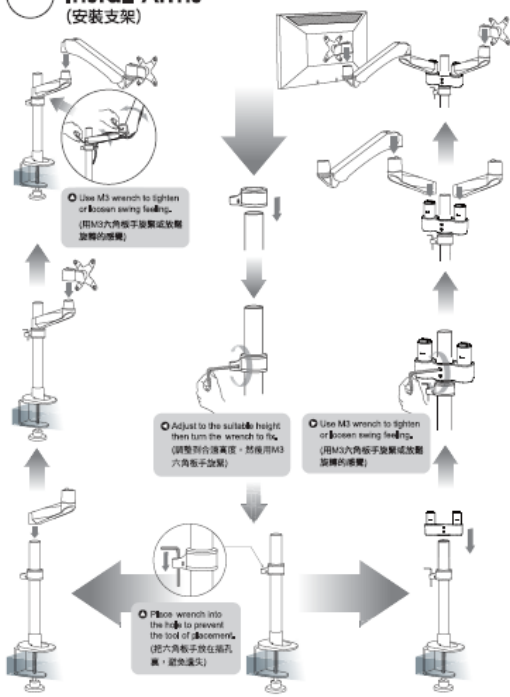
B Grommet (穿桌夾)



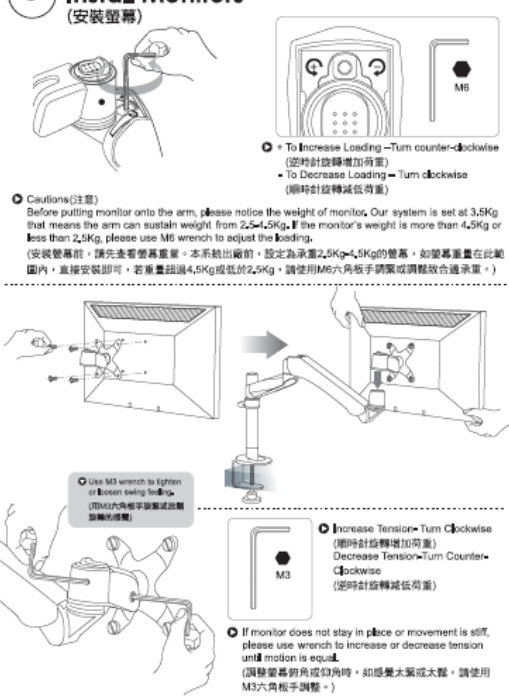
C Wall Mount (壁掛型)



2 Install Arms (安裝支架)



3 Install Monitors (安裝螢幕)













4 Route Cables (理線)

④

Model 型號		EM1111	EM1115	EM1150	EM1154	EM2011	EM2020	EM2026	EM2031	EM2035	EM2036	EM2037	EM2041	EM2042	EM2043	EM2044	EM2045	EM2046	EM2047	EM2048	EM2049	EM2050	EM2051	EM2052	EM2053	EM2054	EM2055	EM2056	EM2057	EM2058	EM2059	EM2060	EM2061	EM2062	EM2063	EM2064	EM2065	EM2066	EM2067	EM2068	EM2069	EM2070	EM2071	EM2072	EM2073	EM2074	EM2075	EM2076	EM2077	EM2078	EM2079	EM2080	EM2081	EM2082	EM2083	EM2084	EM2085	EM2086	EM2087	EM2088	EM2089	EM2090	EM2091	EM2092	EM2093	EM2094	EM2095	EM2096	EM2097	EM2098	EM2099	EM2100																																																																																																																																																																																																																																																																																																																																																																																																																																																																																																																																																																																																																																																																																																																																																																																																																																																																																																																																																																																																																																																																																																																																																																																																																	
Parts																																																																																																																																																																																																																																																																																																																																																																																																																																																																																																																																																																																																																																																																																																																																																																																																																																																																																																																																																																																																																																																																																																																																																																																																																																																																																									

①

										
	VESA (75x75/100/100)	LIFT (75x75/100/100)	ANGLE (75x75/100/100)	PIVOT (75x75/100/100)	SWIVEL (75x75/100/100)	PAN (75x75/100/100)	TILT (75x75/100/100)	EXTENSION (75x75/100/100)	VERTICAL (75x75/100/100)	W/Load (75x75/100/100)
EM35111	HB0 (75x75/100/100)	200mm	0	360°	0	360°	105°	0	0	≤14kg
EM35116	HB0 (75x75/100/100)	200mm	0	360°	0	360°	105°	0	0	≤14kg
EM35138	HB0 (75x75/100/100)	200mm	0	360°	0	360°	105°	0	0	≤14kg
EM35114	HB0 (75x75/100/100)	0	0	360°	0	180°	105°	0	0	≤14kg
EM35211	HB0 (75x75/100/100)	200mm	0	360°	360°	360°	105°	210mm	0	≤14kg
EM35216	HB0 (75x75/100/100)	200mm	0	360°	360°	360°	105°	210mm	0	≤14kg
EM35238	HB0 (75x75/100/100)	200mm	0	360°	360°	360°	105°	210mm	0	≤14kg
EM35214	HB0 (75x75/100/100)	0	0	360°	180°	360°	105°	210mm	0	≤14kg
EM35311	HB0 (75x75/100/100)	200mm	0	360°	360°	360°	105°	420mm	0	≤14kg
EM35316	HB0 (75x75/100/100)	200mm	0	360°	360°	360°	105°	420mm	0	≤14kg
EM35338	HB0 (75x75/100/100)	200mm	0	360°	360°	360°	105°	420mm	0	≤14kg
EM35314	HB0 (75x75/100/100)	0	0	360°	360° *	360°	105°	420mm	0	≤14kg
EM35411	HB0 (75x75/100/100)	200mm	105°	360°	360°	240°	105°	330mm	270mm	2~9kg
EM35416	HB0 (75x75/100/100)	200mm	105°	360°	360°	240°	105°	330mm	270mm	2~9kg
EM35438	HB0 (75x75/100/100)	200mm	105°	360°	360°	240°	105°	330mm	270mm	2~9kg
EM35414	HB0 (75x75/100/100)	0	105°	360°	180°	240°	105°	330mm	270mm	2~9kg
EM34121	HB0 (75x75/100/100)	0	105°	360°	360°	240°	105°	330mm	270mm	2~9kg
EM34128	HB0 (75x75/100/100)	0	105°	360°	360°	240°	105°	330mm	270mm	2~9kg
EM34038	HB0 (75x75/100/100)	0	105°	360°	360°	240°	105°	330mm	270mm	2~9kg
EM35511	HB0 (75x75/100/100)	200mm	105°	360°	360°	240°	105°	540mm	270mm	2~9kg
EM35516	HB0 (75x75/100/100)	200mm	105°	360°	360°	240°	105°	540mm	270mm	2~9kg
EM35538	HB0 (75x75/100/100)	200mm	105°	360°	360°	240°	105°	540mm	270mm	2~9kg
EM55111	HB0 (75x75/100/100)	330mm	0	360°	360°	360°	105°	210mm	0	≤14kg
EM55116	HB0 (75x75/100/100)	330mm	105°	360°	360°	360°	105°	210mm	0	≤14kg
EM55138	HB0 (75x75/100/100)	330mm	105°	360°	360°	360°	105°	210mm	0	≤14kg
EM55211	HB0 (75x75/100/100)	330mm	0	360°	360°	360°	105°	210mm	0	≤14kg
EM55216	HB0 (75x75/100/100)	330mm	0	360°	360°	360°	105°	210mm	0	≤14kg
EM55238	HB0 (75x75/100/100)	330mm	0	360°	360°	360°	105°	210mm	0	≤14kg

1. 售戶滿意是我們努力追求的目標，為維持提供有聲望的售後服務及關於消費者的權利，請仔細閱讀以下條內的資料。
2. 為提高服務效率，請在維修期間及貴貨於修理期間交還本公司處理。
3. 在購買貨品時，請務必讀取購買單並注意條款，如沒有閱讀，會造成在保固期內造成免費維修。
4. 如超過保固期，消費者必須負擔零件及維修服務費。
5. 請按說明書內之使用指南，正常使用本產品，如使用會使用超過產品規格之承受重量，造成產品受損故障，則在保固期內，概不負責維修。消費者必須負擔零件及維修服務費。

1. Consumer's satisfaction with our products is the goal that we have been heading for. To ensure the best after-sale service to consumer and ensure consumer's rights, please read carefully the information stated in the instruction manual.
2. To enhance our service efficiency, please provide purchase invoice or warranty card if request for product maintenance or merchandise exchange.
3. The actual date of purchase and affected sold by distributor on warranty card is required. Free after-sale service will not be guaranteed even under warranty period should any incomplete purchase information.
4. The costs of components and maintenance will be at consumer's expense should the product is invalid for warranty period.
5. Please refer to specification limitation specified in the instruction manual for correct usage. Even under the warranty period, the warranty is not applicable to the products that are damaged due to the reasons other than the quality of the product. The specification specified in the instruction manual and the signs of components and maintenance will be at consumer's expense.

Please lift arm up to highest position while removing the monitor. The monitor arm could bounce upward to cause personal injury when the weight of monitor is removed.

卸下螢幕時，請將支架移到最上端，因為維持平衡的螢幕重量被移開時，支架會反彈，可能會造成傷害。

