


Product Spec. Sheet


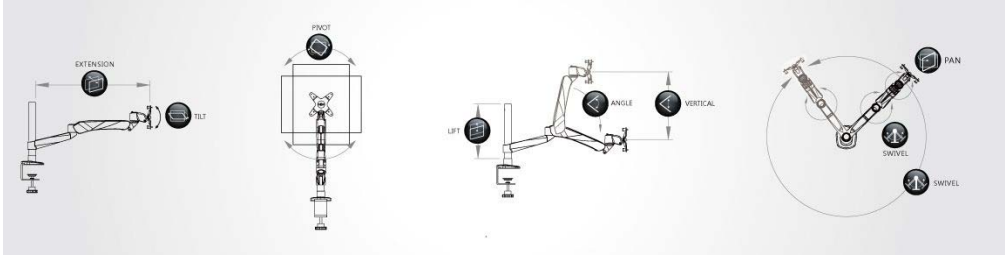
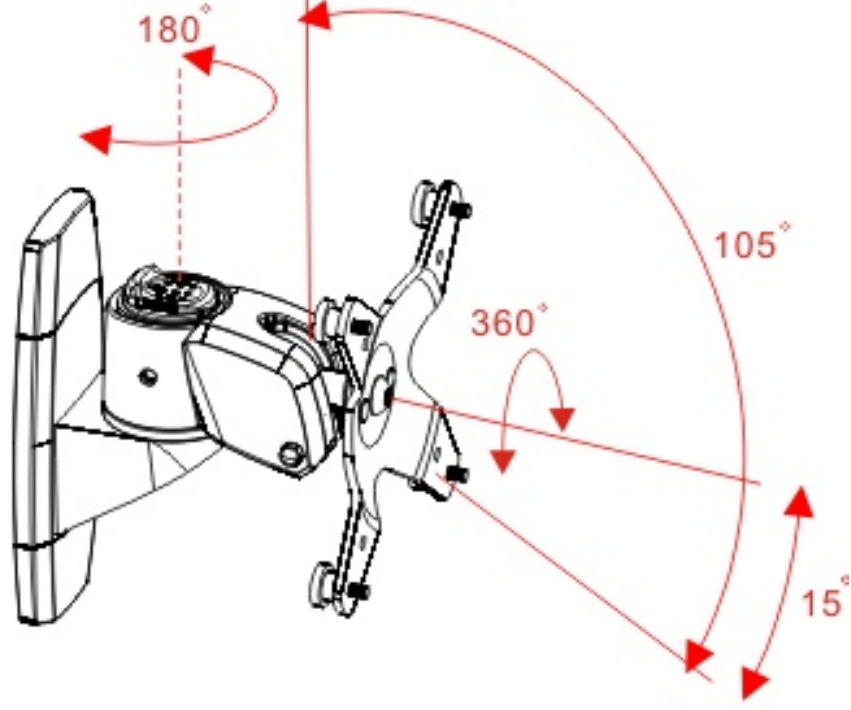
Diamond Series- Pivot Stand

EM31114

Wall Mount LCD Monitor Arm



Product Name	Diamond Series – Pivot Stand
Model Number (color)	EM31114 (Silver Grey)
Product Includes	Wall Mount Base, Monitor Bracket
Attachment Options	 Lock for Security
Product Dimens.	Product : L120xW114xH150 mm Weight : 0.8Kg Color Box : L205xW170xH85 mm Weight : 1Kg
Units per Master Carton	20pcs
Shipping Master Carton Dimens.	Carton : L440x W425xH360 mm
Shipping Weight	N.W.: 20Kg G.W.: 21Kg
Units per Pallet	400pcs
Warranty	14 Month
Weight Capacity	< 14Kg (< 33lbs) almost any VESA compliant monitor up to 32"
Country of Origin	Taiwan

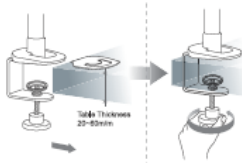
Features	<ol style="list-style-type: none"> 1. Elegant, Stylish and Ergonomic design with high performance 2. Wide Angle and height range for comfortable view position. 3. Swift Movement with easy adjustment. 4. Easily do install and dismount. 5. Aluminum alloy and metal material, strong and safety. 6. Space saving. 7. A considerate Tool fixed design, no more worrying tool of placement. 8. VESA MIS-D 75x75/100x100mm
Tech Specs	<div data-bbox="427 526 1404 683">  <div> VESA LIFT ANGLE PIVOT SWIVEL PAN TILT EXTENSIO VERTICAL Wt.Load </div> <div> --- --- 360° --- 180° 105° --- --- <14Kg </div> </div> <div data-bbox="411 694 1420 952">  </div>
Drawing	<div data-bbox="462 974 1316 1680">  </div> <div data-bbox="758 1747 933 1792"> <p>Unit : mm</p> </div> <div data-bbox="406 1803 1284 1870"> <p>EM31114 Product line Drawing</p> </div>



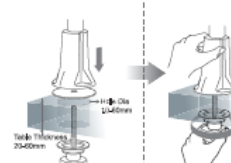
71H016135-015

1 Installation Method of Mount Type (夾座安裝方法)

A C-Clamp (C型夾)

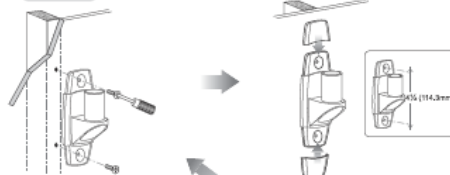


B Grommet (穿桌夾)



C Wall Mount (壁掛型)

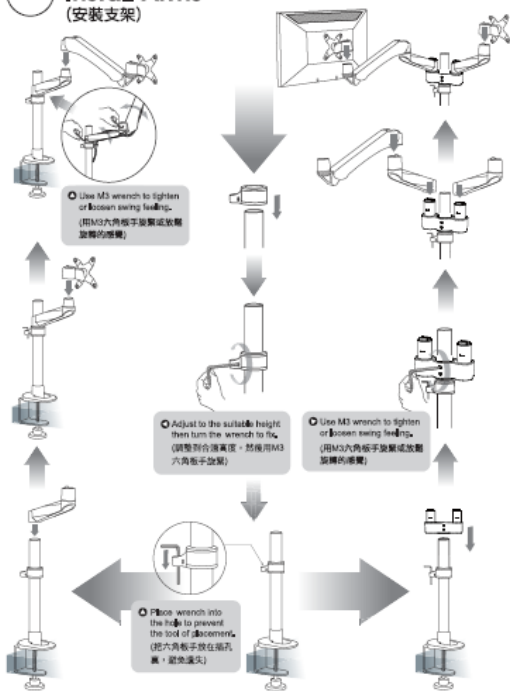
Wood (木質牆)



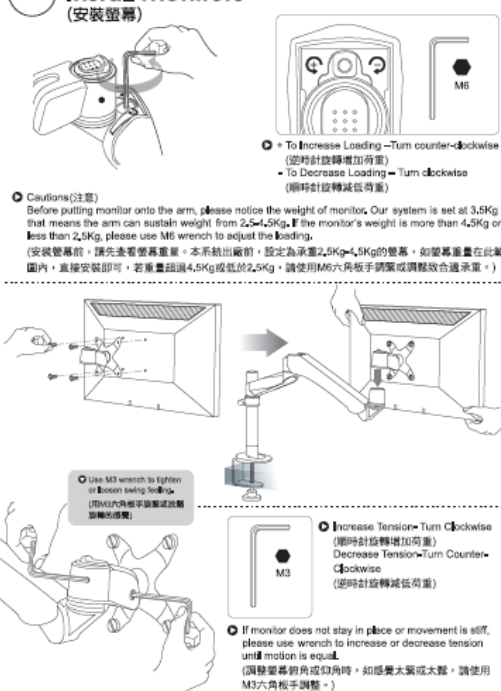
Concrete (水泥牆)



2 Install Arms (安裝支架)













3 Install Monitors (安裝螢幕)



4 Route Cables (理線)

Model 型號		EM1111	EM1115	EM1150	EM1154	EM2011	EM2020	EM2026	EM2031	EM2035	EM2036	EM2037	EM2038	EM2039	EM2040	EM2042	EM2043	EM2044	EM2045	EM2046	EM2047	EM2048	EM2049	EM2050	EM2051	EM2052	EM2053	EM2054	EM2055	EM2056	EM2057	EM2058	EM2059	EM2060	EM2061	EM2062	EM2063	EM2064	EM2065	EM2066	EM2067	EM2068	EM2069	EM2070	EM2071	EM2072	EM2073	EM2074	EM2075	EM2076	EM2077	EM2078	EM2079	EM2080	EM2081	EM2082	EM2083	EM2084	EM2085	EM2086	EM2087	EM2088	EM2089	EM2090	EM2091	EM2092	EM2093	EM2094	EM2095	EM2096	EM2097	EM2098	EM2099	EM2100																																																																																																																																																																																																																																																																																																																																																																																																																																																																																																																																																																																																																																																																																																																																																																																																																																																																																																																																																																																																																																																																																																																																																																																																																																																																																																																																																																																																																																																																																																																															
Parts																																																																																																																																																																																																																																																																																																																																																																																																																																																																																																																																																																																																																																																																																																																																																																																																																																																																																																																																																																																																																																																																																																																																																																																																																																																																																																																																																																																																																																																																																																																																																																																																									

										
	VESA (75x75/100/100)	LIFT (75x75/100/100)	ANGLE (75x75/100/100)	PIVOT (75x75/100/100)	SWIVEL (75x75/100/100)	PAN (75x75/100/100)	TILT (75x75/100/100)	EXTENSION (75x75/100/100)	VERTICAL (75x75/100/100)	W/Load (75x75/100/100)
EM35111	HB0 (75x75/100/100)	200mm	0	360°	0	360°	105°	0	0	≤14kg
EM35116	HB0 (75x75/100/100)	200mm	0	360°	0	360°	105°	0	0	≤14kg
EM35138	HB0 (75x75/100/100)	200mm	0	360°	0	360°	105°	0	0	≤14kg
EM35114	HB0 (75x75/100/100)	0	0	360°	0	180°	105°	0	0	≤14kg
EM35211	HB0 (75x75/100/100)	200mm	0	360°	360°	360°	105°	210mm	0	≤14kg
EM35216	HB0 (75x75/100/100)	200mm	0	360°	360°	360°	105°	210mm	0	≤14kg
EM35238	HB0 (75x75/100/100)	200mm	0	360°	360°	360°	105°	210mm	0	≤14kg
EM35214	HB0 (75x75/100/100)	0	0	360°	180°	360°	105°	210mm	0	≤14kg
EM35311	HB0 (75x75/100/100)	200mm	0	360°	360°	360°	105°	420mm	0	≤14kg
EM35316	HB0 (75x75/100/100)	200mm	0	360°	360°	360°	105°	420mm	0	≤14kg
EM35338	HB0 (75x75/100/100)	200mm	0	360°	360°	360°	105°	420mm	0	≤14kg
EM35314	HB0 (75x75/100/100)	0	0	360°	360° *	360°	105°	420mm	0	≤14kg
EM35411	HB0 (75x75/100/100)	200mm	105°	360°	360°	240°	105°	330mm	270mm	2~9kg
EM35416	HB0 (75x75/100/100)	200mm	105°	360°	360°	240°	105°	330mm	270mm	2~9kg
EM35438	HB0 (75x75/100/100)	200mm	105°	360°	360°	240°	105°	330mm	270mm	2~9kg
EM35414	HB0 (75x75/100/100)	0	105°	360°	180°	240°	105°	330mm	270mm	2~9kg
EM34121	HB0 (75x75/100/100)	0	105°	360°	360°	240°	105°	330mm	270mm	2~9kg
EM34128	HB0 (75x75/100/100)	0	105°	360°	360°	240°	105°	330mm	270mm	2~9kg
EM34038	HB0 (75x75/100/100)	0	105°	360°	360°	240°	105°	330mm	270mm	2~9kg
EM35511	HB0 (75x75/100/100)	200mm	105°	360°	360°	240°	105°	540mm	270mm	2~9kg
EM35516	HB0 (75x75/100/100)	200mm	105°	360°	360°	240°	105°	540mm	270mm	2~9kg
EM35538	HB0 (75x75/100/100)	200mm	105°	360°	360°	240°	105°	540mm	270mm	2~9kg
EM55111	HB0 (75x75/100/100)	330mm	0	360°	360°	360°	105°	210mm	0	≤14kg
EM55116	HB0 (75x75/100/100)	330mm	0	360°	360°	360°	105°	210mm	0	≤14kg
EM55138	HB0 (75x75/100/100)	330mm	0	360°	360°	360°	105°	210mm	0	≤14kg
EM55211	HB0 (75x75/100/100)	330mm	0	360°	360°	360°	105°	210mm	0	≤14kg
EM55216	HB0 (75x75/100/100)	330mm	0	360°	360°	360°	105°	210mm	0	≤14kg
EM55238	HB0 (75x75/100/100)	330mm	0	360°	360°	360°	105°	210mm	0	≤14kg

1. 有嚴重虛假或誇大陳述的宣傳，如誇大誇飾對消費者聲譽的宣傳效果及關於消費者的權利，誇大經濟價值與藥效的資訊。
2. 為保證品質改善，應加強藥品採買及供應對消費者製藥業成本價控制。
3. 在購買食品時，應務必認清購買日並註明日期，如有必要應購買，會造成在保用期前內無法免責維修。
4. 如發現保用期，消費者必須認真檢查產品是否品質有變。
5. 按保用期內之價格控制，如使用產品，如使用後使用超過產品價格之受害位置，造成產品受腐蝕時，應在保用期前，將不負責維修。消費者必須認真檢查及結構維修。

3. Consumer's satisfaction with our products is the goal that we have been heading for. To ensure the best after-sale service to consumer and ensure consumer's rights, please read carefully the information stated in the instruction manual.
4. To enhance our service efficiency, please provide purchase invoice or warranty card if request for product maintenance or merchandise exchange.
5. The act of purchase and affect sold by distributor on warranty card is required. Free after-sale service will not be guaranteed even under warranty period should any incomplete purchase information.
6. The costs of components and maintenance will be at consumer's expense should the product is in fault for warranty period.
7. Please refer to specification/limitation specified in the instruction manual for correct usage. Even under the warranty period, the warranty will not be provided for the product if the consumer does not follow the correct usage or the specification specified in the instruction manual, and the costs of components and maintenance will be at consumer's expense.

Please lift arm up to highest position while removing the monitor. The monitor arm could bounce upward to cause personal injury when the weight of monitor is removed.

卸下螢幕時，請將支架移到最上端，因為維持平衡的螢幕重量被移開時，支架會反彈，可能會造成傷害。

