

Product Spec. Sheet


Diamond Series- Pivot Stand











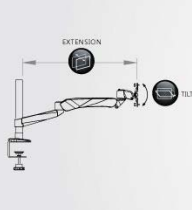

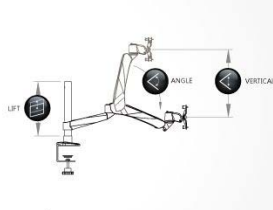
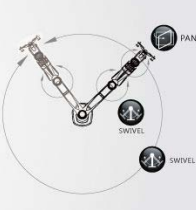
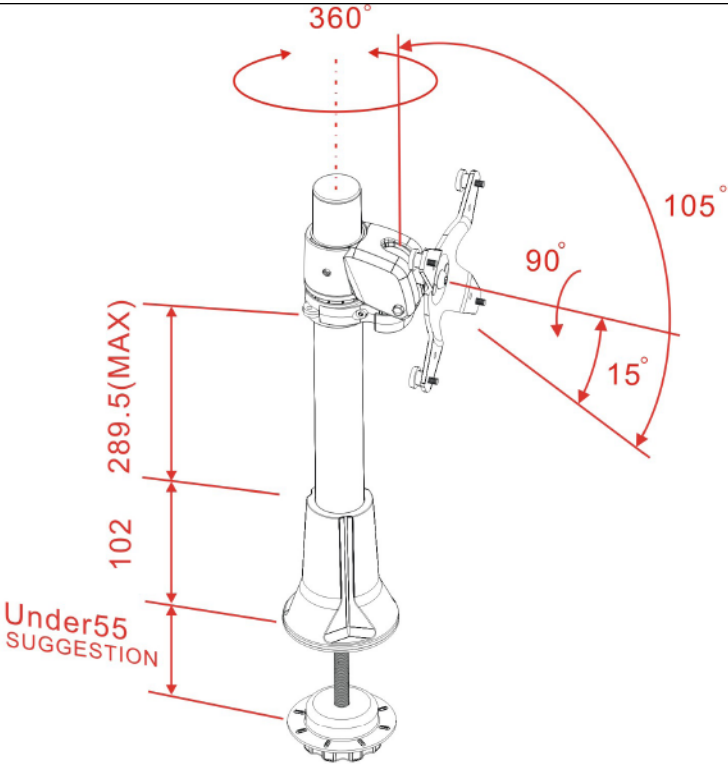
EM31111

Grommet Mount LCD Monitor Arm

Quick Install & Dismount



Product Name	Diamond Series – Pivot Stand
Model Number (color)	EM31111 (Silver Grey)
Product Includes	Grommet Type Desk Mount Base Monitor Bracket
Attachment Options	 Lock for Security
Product Dimens.	Product : L130xW140xH545 mm Weight : 1.18Kg Color Box : L560xW535xH300 mm Weight : 1.62Kg
Units per Master Carton	8pcs
Shipping Master Carton Dimens.	Carton : L560x W535xH300 mm
Shipping Weight	N.W.: 13Kg G.W.: 14Kg
Units per Pallet	8pcs
Warranty	14 Months
Weight Capacity	< 15Kg (< 33lbs) almost any VESA compliant monitor up to 32"
Country of Origin	Taiwan

Features	<div>1. Elegant, Stylish and Ergonomic design with high performance</div> <div>2. Wide Angle and height range for comfortable view position.</div> <div>3. Swift Movement with easy adjustment.</div> <div>4. Easily do install and dismount.</div> <div>5. Aluminum alloy and metal material, strong and safety.</div> <div>6. Space saving.</div> <div>7. A considerate Tool fixed design, no more worrying tool of placement.</div> <div>8. VESA MIS-D 75x75/100x100mm</div>
Tech Specs	<div><div><div></div><div>VESA</div></div><div><div></div><div>LIFT</div></div><div><div></div><div>ANGLE</div></div><div><div></div><div>PIVOT</div></div><div><div></div><div>SWIVEL</div></div><div><div></div><div>PAN</div></div><div><div></div><div>TILT</div></div><div><div></div><div>EXTENSIO</div></div><div><div></div><div>VERTICAL</div></div><div><div></div><div>Wt.Load</div></div></div> <div><div>0-200mm</div><div>0</div><div>360°</div><div>0</div><div>360°</div><div>105°</div><div>0</div><div>0</div><div>≤14kg</div></div> <div><div></div><div></div><div></div><div></div></div>
Drawing	<div></div> <div>Untis : mm</div>



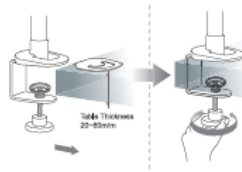
LCD ARM SYSTEM **USER'S MANUAL**

(螢幕支架使用手冊)

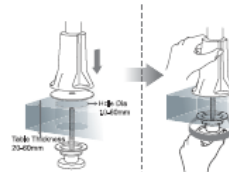
71H016135-015

1 Installation Method of Mount Type (夾座安裝方法)

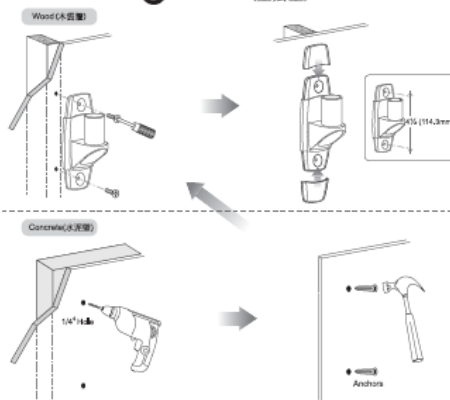
A C-Clamp (C型夾)



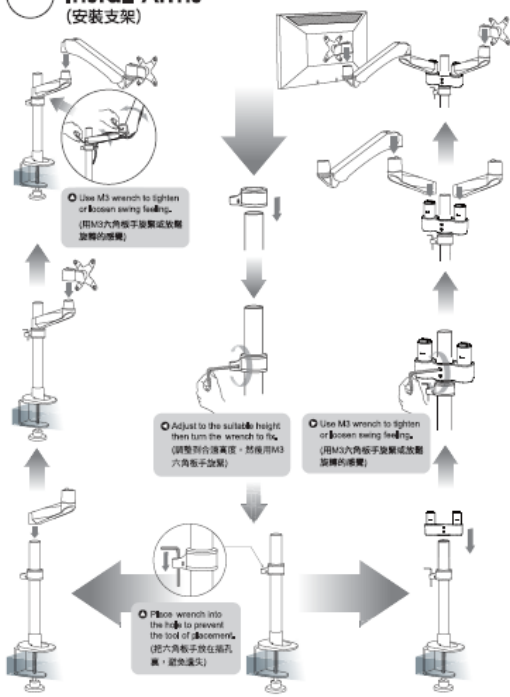
B Grommet (穿桌夾)



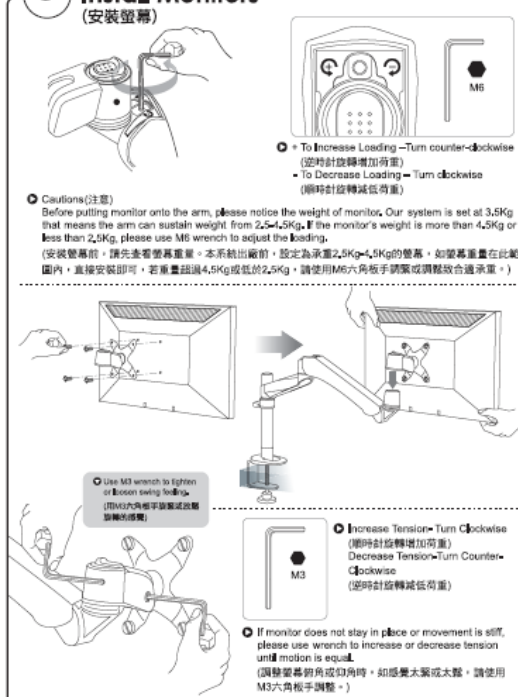
C Wall Mount (壁掛型)



2 Install Arms (安裝支架)



3 Install Monitors (安裝螢幕)













4 Route Cables (理線)

①

[illegible]

①

										
	VESA	LIFT	ANGLE	PIST	SWIVEL	PAN	TILT	EXTENSION	VERTICAL	W/Load
EM31111	WFO (75x100x100)	200mm	0	360°	0	360°	105°	0	0	≤14kg
EM31116	WFO (75x100x100)	200mm	0	360°	0	360°	105°	0	0	≤14kg
EM31136	WFO (75x100x100)	200mm	0	360°	0	360°	105°	0	0	≤14kg
EM31114	WFO (75x100x100)	0	0	360°	0	180°	105°	0	0	≤14kg
EM32111	WFO (75x100x100)	200mm	0	360°	360°	360°	105°	210mm	0	≤14kg
EM32116	WFO (75x100x100)	200mm	0	360°	360°	360°	105°	210mm	0	≤14kg
EM32136	WFO (75x100x100)	200mm	0	360°	360°	360°	105°	210mm	0	≤14kg
EM32114	WFO (75x100x100)	0	0	360°	180°	360°	105°	210mm	0	≤14kg
EM33111	WFO (75x100x100)	200mm	0	360°	360°	360°	105°	420mm	0	≤14kg
EM33116	WFO (75x100x100)	200mm	0	360°	360°	360°	105°	420mm	0	≤14kg
EM33136	WFO (75x100x100)	200mm	0	360°	360°	360°	105°	420mm	0	≤14kg
EM33114	WFO (75x100x100)	0	0	360°	360°	360°	105°	420mm	0	≤14kg
EM34111	WFO (75x100x100)	200mm	100°	360°	360°	240°	105°	330mm	270mm	2-9kg
EM34116	WFO (75x100x100)	200mm	100°	360°	360°	240°	105°	330mm	270mm	2-9kg
EM34136	WFO (75x100x100)	200mm	100°	360°	360°	240°	105°	330mm	270mm	2-9kg
EM34114	WFO (75x100x100)	0	100°	360°	180°	240°	105°	330mm	270mm	2-9kg
EM34211	WFO (75x100x100)	0	100°	360°	360°	240°	105°	330mm	270mm	2-9kg
EM34216	WFO (75x100x100)	0	100°	360°	360°	240°	105°	330mm	270mm	2-9kg
EM34036	WFO (75x100x100)	0	100°	360°	360°	240°	105°	330mm	270mm	2-9kg
EM35111	WFO (75x100x100)	200mm	100°	360°	360°	240°	105°	540mm	270mm	2-9kg
EM35116	WFO (75x100x100)	200mm	100°	360°	360°	240°	105°	540mm	270mm	2-9kg
EM35136	WFO (75x100x100)	200mm	100°	360°	360°	240°	105°	540mm	270mm	2-9kg
EM35114	WFO (75x100x100)	0	100°	360°	360°	240°	105°	540mm	270mm	2-9kg
EM35111	WFO (75x100x100)	160mm	100°	360°	360°	240°	105°	540mm	270mm	Not Natively ≤20kg
EM35116	WFO (75x100x100)	160mm	100°	360°	360°	240°	105°	540mm	270mm	Not Natively ≤20kg
EM35136	WFO (75x100x100)	160mm	100°	360°	360°	240°	105°	540mm	270mm	Not Natively ≤20kg
EM35114	WFO (75x100x100)	160mm	100°	360°	360°	240°	105°	540mm	270mm	Not Natively ≤20kg
EM35111	WFO (75x100x100)	330mm	100°	360°	360°	240°	105°	540mm	270mm	Not Natively ≤20kg
EM35116	WFO (75x100x100)	330mm	100°	360°	360°	240°	105°	540mm	270mm	Not Natively ≤20kg
EM35136	WFO (75x100x100)	330mm	100°	360°	360°	240°	105°	540mm	270mm	Not Natively ≤20kg
EM35211	WFO (75x100x100)	330mm	0	360°	360°	360°	105°	420mm	0	Not Natively ≤20kg
EM35216	WFO (75x100x100)	330mm	0	360°	360°	360°	105°	420mm	0	Not Natively ≤20kg
EM35236	WFO (75x100x100)	330mm	0	360°	360°	360°	105°	420mm	0	Not Natively ≤20kg

保固條款 (Scope of Guarantee)

- 客戶滿意是我們工作的首要目標，為提供快捷優質客戶服務及維護權益並對於顧客的意見回饋，特將相關處理程序列明於內供參考。
1. 生產品質保證：憑保固單保證產品品質及正常運作。
2. 免費維修服務：如發現產品有故障或損壞，請立即通知本公司，我們將安排專業人員為您提供服務。
3. 更換零件費用之免稅扣除：在保固期內，因產品使用所造成之零件損壞，本公司將免費為您更換零件。
4. 運費與安裝費之免稅扣除：正常安裝費用、配件及運輸費用均包含在保固範圍之內。但此項優惠僅限於：不含有貨物損傷、非由不當使用導致必須進行修理之產品適用範圍。
- Consumer's satisfaction with our products is the goal that we have been heading for. To ensure the best after-sale service to consumers and ensure consumer's rights, please read carefully the information stated in the instruction manual.
2. To enhance our service efficiency, please provide purchase invoice or warranty card if requested for product maintenance or merchandise exchange.
3. The actual date of purchase and affected used by distributor on warranty card is required. Five after-sales services will not be guaranteed under warranty period should you request for merchandise purchase information.
4. The costs of components and maintenance will be at consumer's expense should the product is in-faulted for warranty period.
5. Please refer to specification Instruction specified in the instruction manual for correct usage. Even under the warranty period, this warrant does not cover the problems or damage resulting from the loading weight that exceeds the specification specified in the instruction manual.

Please lift arm up to highest position while removing the monitor. The monitor arm could bounce upward to cause personal injury when the weight of monitor is removed.

卸下螢幕時，請將支架移到最上端，因為維持平衡的螢幕重量被移開時，支架會反彈，可能會造成傷害。

