


Product Spec. Sheet

Diamond Series- Swivel Arm

Wall Mount LCD Monitor Arm

EM32114



Product Name	Diamond Series - Swivel Arm Wall Mount LCD Monitor Arm
Model Number (color)	EM32114 (Silver Grey)
Product Includes	Swivel Arm, Wall Mount Base Monitor Bracket
Attachment Options	 Lock for Security
Product Dimension	L175*W135*H295MM Weight : 1.5Kg
Units per Master Carton	8pcs
Shipping Master Carton Dimension	L560*W310*H370MM
Shipping Weight	N.W.: 12Kg G.W.: 13Kg
Units per Pallet	240pcs
Warranty	14 Months
Weight Capacity	≤ 14Kg (30.8 lbs) almost any VESA compliant monitor up to 30"
Country of Origin	Taiwan

Features	<div>1. Elegant, Stylish and Ergonomic design with high performance</div> <div>2. Wide Angle and height range for comfortable view position.</div> <div>3. Swift Movement with easy adjustment.</div> <div>4. 3 quick mode release function as Pivot stand, Swivel or Spring Arm.</div> <div>5. Easily do install and dismount.</div> <div>6. Aluminum alloy and metal material, strong and safety.</div> <div>7. Internal cable management routed cables neatly under arm.</div> <div>8. Space saving.</div> <div>9. A considerate Tool fixed design, no more worrying tool of placement.</div> <div>10. VESA MIS-D 75x75/100x100mm</div>
Tech Specs	<div><div><div></div><div>VESA</div></div><div><div></div><div>LIFT</div><div>0</div></div><div><div></div><div>ANGLE</div><div>0</div></div><div><div></div><div>PIVOT</div><div>360°</div></div><div><div></div><div>SWIVEL</div><div>180°</div></div><div><div></div><div>PAN</div><div>360°</div></div><div><div></div><div>TILT</div><div>105°</div></div><div><div></div><div>EXTENSIO</div><div>210mm</div></div><div><div></div><div>VERTICAL</div><div>0</div></div><div><div></div><div>Wt.Load</div><div>≤14Kg</div></div></div> <div><div></div><div></div><div></div><div></div></div>
Drawing	<div></div> <div>Untis : mm</div> <div>EM32114 Product line Drawing</div>

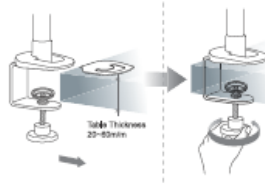
LCD ARM SYSTEM **USER'S MANUAL**

(螢幕支架使用手冊)

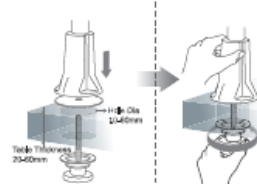
71H016135-015

1 Installation Method of Mount Type (夾座安裝方法)

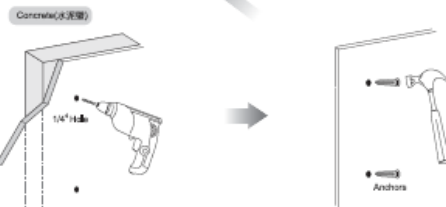
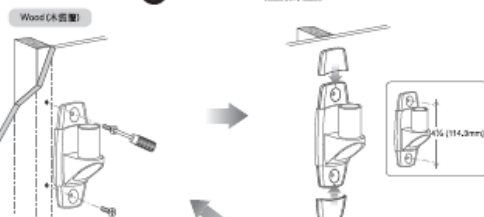
A C-Clamp (C型夾)



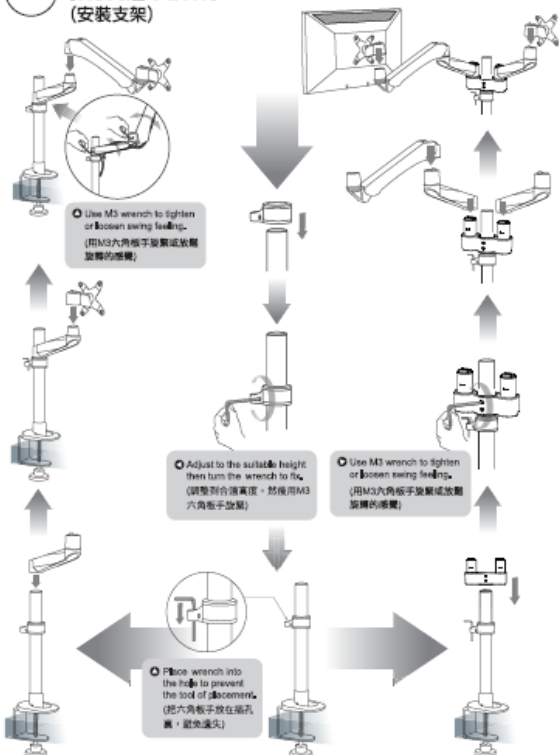
B Grommet (穿桌夾)



C Wall Mount (壁掛型)



2 Install Arms (安裝支架)



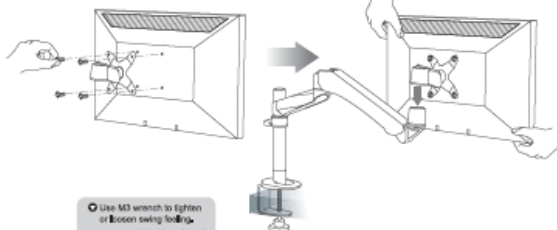
3 Install Monitors (安裝螢幕)



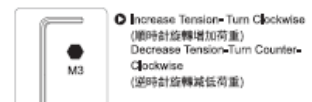
- To Increase Loading - Turn counter-clockwise (逆時針旋轉增加荷重)
- To Decrease Loading - Turn clockwise (順時針旋轉減低荷重)

Caution (注意)

Before putting monitor onto the arm, please notice the weight of monitor. Our system is set at 3.5Kg that means the arm can sustain weight from 2.5-4.5Kg. If the monitor's weight is more than 4.5Kg or less than 2.5Kg, please use M6 wrench to adjust the loading.
(安裝螢幕前，請先查看螢幕重量。本系統出廠前，設定為承重2.5Kg-4.5Kg的螢幕，如螢幕重量在此範圍內，直接安裝即可，若重量超過4.5Kg或低於2.5Kg，請使用M6六角扳手調整或調低合適承重。)



- Use M3 wrench to tighten or loosen swing feeling. (用M3六角扳手調整或放鬆旋轉的感覺)



- Increase Tension - Turn Clockwise (順時針旋轉增加荷重)
- Decrease Tension - Turn Counter-clockwise (逆時針旋轉減低荷重)











If monitor does not stay in place or movement is stiff, please use wrench to increase or decrease tension until motion is equal.
(調整螢幕角度或移動時，如感覺太緊或太鬆，請使用M3六角扳手調整。)

(理線)



(包裝內部品及五金件)

[illegible]

										
	VESA (75x75/100x100)	LPT	ANGLE	PIVOT	SWIVEL	PAN	TILT	EXTENSION	VERTICAL	Wt Load
EM331111	VE-0 (75x75/100x100)	200mm	0	360°	0	360°	105°	0	0	≤14kg
EM331116	VE-0 (75x75/100x100)	200mm	0	360°	0	360°	105°	0	0	≤14kg
EM331136	VE-0 (75x75/100x100)	200mm	0	360°	0	360°	105°	0	0	≤14kg
EM331114	VE-0 (75x75/100x100)	0	0	360°	0	180°	105°	0	0	≤14kg
EM321111	VE-0 (75x75/100x100)	200mm	0	360°	360°	360°	105°	210mm	0	≤14kg
EM321116	VE-0 (75x75/100x100)	200mm	0	360°	360°	360°	105°	210mm	0	≤14kg
EM321136	VE-0 (75x75/100x100)	200mm	0	360°	360°	360°	105°	210mm	0	≤14kg
EM321114	VE-0 (75x75/100x100)	0	0	360°	180°	360°	105°	210mm	0	≤14kg
EM331111	VE-0 (75x75/100x100)	200mm	0	360°	360°	360°	105°	420mm	0	≤14kg
EM331116	VE-0 (75x75/100x100)	200mm	0	360°	360°	360°	105°	420mm	0	≤14kg
EM331136	VE-0 (75x75/100x100)	200mm	0	360°	360°	360°	105°	420mm	0	≤14kg
EM331114	VE-0 (75x75/100x100)	0	0	360°	360°	360°	105°	420mm	0	≤14kg
EM341111	VE-0 (75x75/100x100)	200mm	100°	360°	360°	240°	105°	330mm	270mm	2-9kg
EM341116	VE-0 (75x75/100x100)	200mm	100°	360°	360°	240°	105°	330mm	270mm	2-9kg
EM341136	VE-0 (75x75/100x100)	200mm	100°	360°	360°	240°	105°	330mm	270mm	2-9kg
EM341114	VE-0 (75x75/100x100)	0	100°	360°	180°	240°	105°	330mm	270mm	2-9kg
EM341121	VE-0 (75x75/100x100)	0	100°	360°	360°	240°	105°	330mm	270mm	2-9kg
EM341126	VE-0 (75x75/100x100)	0	100°	360°	360°	240°	105°	330mm	270mm	2-9kg
EM340336	VE-0 (75x75/100x100)	0	100°	360°	360°	240°	105°	330mm	270mm	2-9kg
EM351111	VE-0 (75x75/100x100)	200mm	100°	360°	360°	240°	105°	540mm	270mm	2-9kg
EM351116	VE-0 (75x75/100x100)	200mm	100°	360°	360°	240°	105°	540mm	270mm	2-9kg
EM351136	VE-0 (75x75/100x100)	200mm	100°	360°	360°	240°	105°	540mm	270mm	2-9kg

1. 有戶應盡我們致力追求的目標，繼續提供客戶應盡的無償服務及屬於消費者的權利，履行相關政府業內的責任。
2. 為提升服務效率，將在維修時間及品質方面提供誠實或零成本保證書。
3. 在買賣房屋時，應務必購買房屋質量保證計劃，如有任何問題，當會將在保證期內快速免費維修。
4. 如能保留房屋，消費者亦必須遵守條件及維修標準。
5. 關於保證期內之消費者權利，正努力尋求方案，如何向曾使用過產品及服務之業主置置，造成產品受過故障，應在原因內，將不負責任維修。

1. Consumer's satisfaction with products is the goal that we have been heading for. To ensure the best after-sale service to consumers and ensure consumer's rights, please read carefully the information stated in the instruction manual.
2. To enhance our service efficiency, please provide purchase invoice or warranty card if request for product maintenance or merchandise exchange.
3. The actual date of purchase and affixed seal by distributor on warranty card is required. Free after-sale service will not be guaranteed even under warranty period should any incomplete purchase information.
4. The costs of components and maintenance will be at consumer's expense should the product is inside for warranty period.
5. Please refer to the instruction manual for the warranty details. The warranty does not cover the problems or damage resulting from the loading weight that exceeds the specification specified in the instruction manual and the costs of components and maintenance will be at consumer's expense.

Please lift arm
The needles

Please lift arm up to highest position while removing the monitor. The monitor arm could bounce upward to cause personal injury when the weight of monitor is removed.

卸下螢幕時，請將支架移到最上端，因為維持平衡的螢幕重量被卸開時，支架會反彈，可能會造成傷害。

