












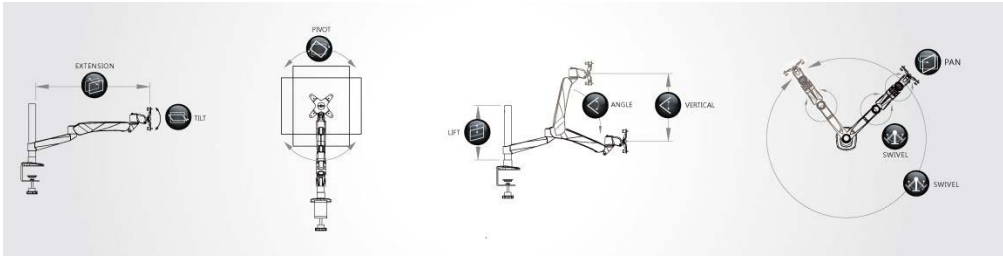
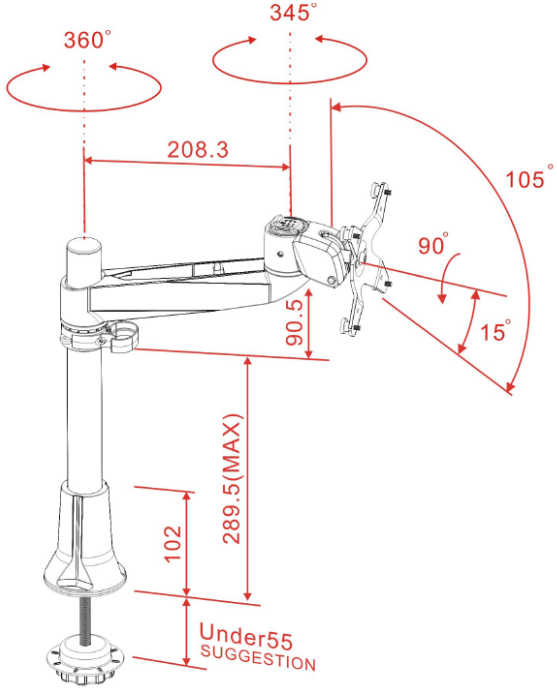
Product Spec. Sheet

Diamond Series- 1 Monitor Swivel Arm

Grommet Type Mount LCD Monitor Arm EM32111



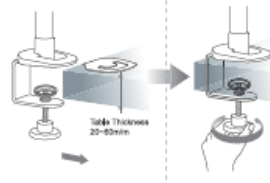
Product Name	Diamond Series- 1 Monitor Swivel Arm
Model Number (color)	EM32111 (Silver Grey)
Product Includes	Swivel Arm, Grommet desk Mount Base (Pole Length : 302mm) Stand, Monitor Bracket
Attachment Options	 Lock for Security
Product Dimension	L465xW224xH130 mm Weight : 2.1Kg
Units per Master Carton	6 pcs
Shipping Master Carton Dimension	L687x W480xH280 mm
Shipping Weight	N.W.: 12.6Kg G.W.: 13.6Kg
Units per Pallet	8 pcs
Warranty	14 Months
Weight Capacity	≤ 14Kg (30.8 lbs) almost any VESA compliant monitor up to 30"
Country of Origin	Taiwan

Features	<ol style="list-style-type: none"> 1. Elegant, Stylish and Ergonomic design with high performance 2. Wide Angle and height range for comfortable view position. 3. Swift Movement with easy adjustment. 4. 3 quick mode release function as Pivot stand, Swivel or Spring Arm. 5. Easily do install and dismount. 6. Aluminum alloy and metal material, strong and safety. 7. Internal cable management routed cables neatly under arm. 8. Space saving. 9. A considerate Tool fixed design, no more worrying tool of placement. 10. VESA MIS-D 75x75/100x100mm
Tech Specs	<div>           </div> <div> VESA LIFT ANGLE PIVOT SWIVEL PAN TILT EXTENSIO VERTICAL Wt.Load </div> <div> 200mm 0 360° 360° 360° 105° 210mm 0 ≤14Kg </div> 
Drawing	 <p style="text-align: center;">Untis : mm</p> <h2 style="text-align: center;">EM32111 Product line Drawing</h2>

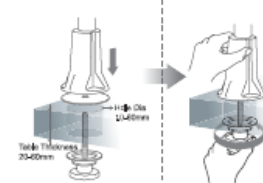
(螢幕支架使用手冊)



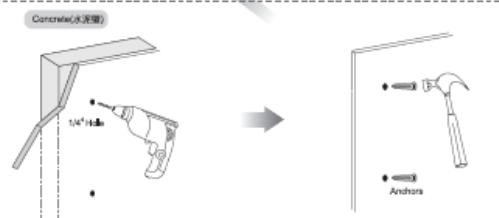
A C-Clamp (C型夹)



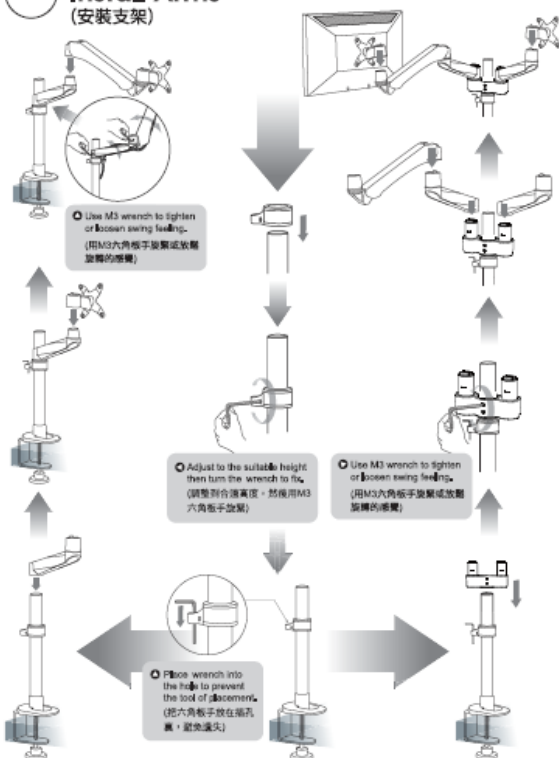
B Grommet (穿桌夾)



C Wall Mount (壁掛型)



(安裝支架)



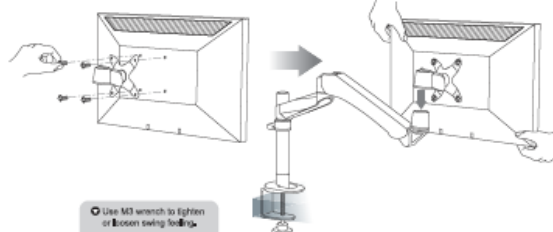
(安裝螢幕)



- * To Increase Loading – Turn counter-clockwise
(逆時針旋轉增加荷重)
- To Decrease Loading – Turn clockwise
(順時針旋轉減低荷重)

● Cautions(注意)

● Cautions (注意)
Before putting monitor onto the arm, please notice the weight of monitor. Our system is set at 3.5Kg that means the arm can sustain weight from 2.5~4.5Kg. If the monitor's weight is more than 4.5Kg or less than 2.5Kg, please use M6 wrench to adjust the loading.
(安裝螢幕前，請先查看螢幕重量。本系統出廠前，設定為承重2.5Kg~4.5Kg的螢幕，如螢幕重量在此範圍內，直接安裝即可，若重量超過4.5Kg或低於2.5Kg，請使用M6六角板手調整或調整組合適承重。）



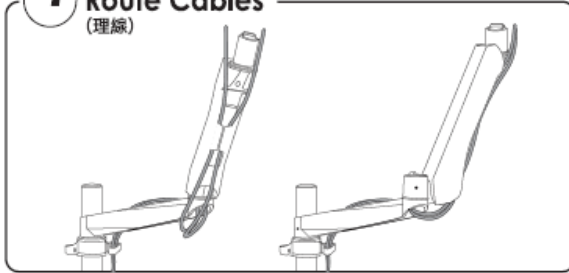
- Use M3 wrench to tighten or loosen swing foot.



- Increase Tension→Turn Clockwise
(順時計旋轉增加荷重)
Decrease Tension→Turn Counter-
Clockwise
(逆時計旋轉減低荷重)

- If monitor does not stay in place or movement is still, please use wrench to increase or decrease tension until motion is equal.
(調整螢幕俯角或仰角時，如感覺太緊或太鬆，請使用M3六角板手調整。)

4 Route Cables (理線)



Supplied Parts and Hardwares (包裝內部品及五金件)

Model 型號	EM31111	EM31116	EM31118	EM31114	EM32111	EM32116	EM32114	EM33111	EM33116	EM33114	EM34111	EM34116	EM34114	EM35111	EM35116	EM35114	EM35118	EM35112	EM35110	EM35114	EM35116	EM35118	EM35112	EM35110	EM35114	EM35116	EM35118	EM35112	EM35110
C-Clamp (C型夾座)																													
Grommet (穿桌夾座)																													
2 in 1 (2合1)																													
Wall Mount (牆座)																													
M6 Wrench (M6六角板手)																													
M3 Wrench (M3六角板手)																													
EVA Cushion (軟墊)																													
Anconex2 Screw x2 (螺絲x2 螺釘x2)																													
Spring Arm (彈簧臂)																													
Swivel Arm (旋轉臂)																													
Monitor Mount (螢幕固定座)																													
Cable Clip (理線夾)																													
Dual Stand (分支座)																													

Features and Specification (功能特性)

	VESA	UP	ANGLE	Pivot	SWIVEL	PAN	TILT	EXTENSION	VERTICAL	W Load
EM31111	VESA (75x75/100x100)	200mm	0	360°	0	360°	105°	0	0	≤14kg
EM31116	VESA (75x75/100x100)	200mm	0	360°	0	360°	105°	0	0	≤14kg
EM31118	VESA (75x75/100x100)	200mm	0	360°	0	360°	105°	0	0	≤14kg
EM31114	VESA (75x75/100x100)	0	0	360°	0	180°	105°	0	0	≤14kg
EM32111	VESA (75x75/100x100)	200mm	0	360°	360°	360°	105°	210mm	0	≤14kg
EM32116	VESA (75x75/100x100)	200mm	0	360°	360°	360°	105°	210mm	0	≤14kg
EM32118	VESA (75x75/100x100)	200mm	0	360°	360°	360°	105°	210mm	0	≤14kg
EM32114	VESA (75x75/100x100)	0	0	360°	180°	360°	105°	210mm	0	≤14kg
EM33111	VESA (75x75/100x100)	200mm	0	360°	360°	360°	105°	420mm	0	≤14kg
EM33116	VESA (75x75/100x100)	200mm	0	360°	360°	360°	105°	420mm	0	≤14kg
EM33118	VESA (75x75/100x100)	200mm	0	360°	360°	360°	105°	420mm	0	≤14kg
EM33114	VESA (75x75/100x100)	0	0	360°	360°	360°	105°	420mm	0	≤14kg
EM34111	VESA (75x75/100x100)	200mm	100°	360°	360°	240°	105°	330mm	270mm	2-9kg
EM34116	VESA (75x75/100x100)	200mm	100°	360°	360°	240°	105°	330mm	270mm	2-9kg
EM34118	VESA (75x75/100x100)	200mm	100°	360°	360°	240°	105°	330mm	270mm	2-9kg
EM34114	VESA (75x75/100x100)	0	100°	360°	180°	240°	105°	330mm	270mm	2-9kg
EM34121	VESA (75x75/100x100)	0	100°	360°	360°	240°	105°	330mm	270mm	2-9kg
EM34126	VESA (75x75/100x100)	0	100°	360°	360°	240°	105°	330mm	270mm	2-9kg
EM34128	VESA (75x75/100x100)	0	100°	360°	360°	240°	105°	330mm	270mm	2-9kg
EM34124	VESA (75x75/100x100)	0	100°	360°	360°	240°	105°	330mm	270mm	2-9kg
EM35111	VESA (75x75/100x100)	200mm	100°	360°	360°	240°	105°	540mm	270mm	2-9kg
EM35116	VESA (75x75/100x100)	200mm	100°	360°	360°	240°	105°	540mm	270mm	2-9kg
EM35118	VESA (75x75/100x100)	200mm	100°	360°	360°	240°	105°	540mm	270mm	2-9kg
EM35114	VESA (75x75/100x100)	200mm	100°	360°	360°	240°	105°	540mm	270mm	2-9kg

保證條款 (Scope of Guarantee)

- 客戶滿意是我們努力追求的目標。為維持提供客戶能免費的售後服務及關於消費者的權利，請仔細閱讀說明書內的資訊。
 - 為保護服務品質，請在購機保證及後續的售後服務前，請先向本公司索取保證書。
 - 在購買保證前，請務必向本公司索取保證書，並向本公司索取保證書，並向本公司索取保證書。
 - 如購買保證前，消費者必須向本公司索取保證書，並向本公司索取保證書，並向本公司索取保證書。
 - 請向本公司索取保證書，並向本公司索取保證書，並向本公司索取保證書。
1. Consumer's satisfaction with our products is the goal that we have been heading for. To assure the best after-sale service to consumers and ensure consumer's rights, please read carefully the information stated in the instruction manual.
2. To enhance our service efficiency, please provide purchase invoice or warranty card if request for product maintenance or merchandise exchange.
3. The actual date of purchase and affixed seal by distributor on warranty card is required. Free after-sale service will not be guaranteed even under warranty period should any incomplete purchase information.
4. The costs of components and maintenance will be at consumer's expense should the product is involved for warranty period.
5. Please refer to specification limitation specified in the instruction manual for correct usage. Even under the warranty period, this warranty does not cover the problems or damage resulting from the loading weight that exceeds the specification specified in the instruction manual and the costs of components and maintenance will be at consumer's expense.

Warning:

Please lift arm up to highest position while removing the monitor. The monitor arm could bounce upward to cause personal injury when the weight of monitor is removed.

如下圖所示，請將支架移到最上端，因為維持平衡的螢幕重量被移除時，支架會反彈，可能會造成傷害。

