












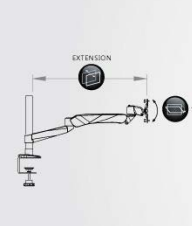
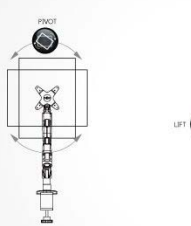
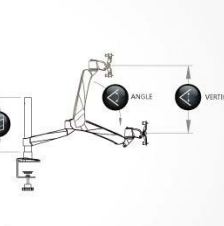

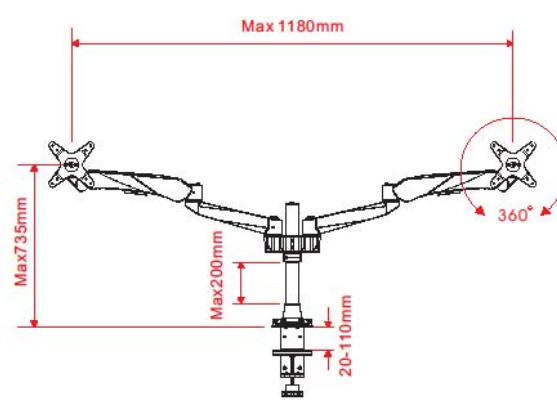
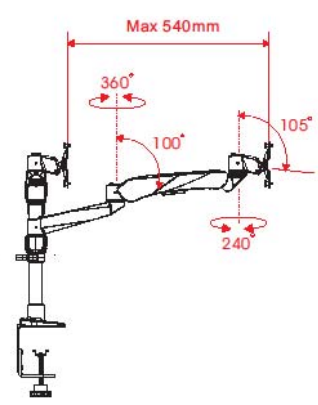
Product Spec Sheet

Diamond Serials- 2 Monitor 2 Joint Spring Arm

2in1(C-Clamp + Grommet) Type Monitor Arm EM45136



Product Name	Diamond Serials- 2 Monitor 2 Joint Spring Arm
Model Number (color)	EM45136 (Silver Color)
Product Includes	2 Joint Spring Arm 2 in1 (Clamp + Grommet) (Pole Length : 302mm), Dual Stand, 2 Monitor Bracket
Attachment Options	
Product Dimens.	White Box: L:382x W:136x H:526mm N. W.: 8KG
Units per Master Carton	2pcs
Shipping Master Carton Dimens.	L:540x W:297x H:406mm
Shipping Weight	N.W.:16Kg G.W.:17Kg
Units per Pallet	64pcs
Warranty	14 Months
Weight Capacity	≤20kg (< 44lbs) the max weight for single arm is ≤2~9kg.(4.4-19.8lbs) almost any VESA compliant monitor up to 27"
Country of Origin	Taiwan

Features	<ol style="list-style-type: none"> 1. Elegant, Stylish and Ergonomic design with high performance 2. Wide Angle and height range for comfortable view position. 3. Swift Movement with easy adjustment. 4. 3 quick mode release function as Pivot stand, Swivel or Spring Arm. 5. Easily do install and dismount. 6. Aluminum alloy and metal material, strong and safety. 7. Internal cable management routed cables neatly under arm. 8. Space saving. 9. A considerate Tool fixed design, no more worrying tool of placement. 10. VESA MIS-D 75x75/100x100mm
Tech Specs	<div style="display: flex; justify-content: space-around; align-items: flex-end;"> <div style="text-align: center;">  VESA 160mm </div> <div style="text-align: center;">  LIFT 100° </div> <div style="text-align: center;">  ANGLE 100° </div> <div style="text-align: center;">  PIVOT 360° </div> <div style="text-align: center;">  SWIVEL 360° </div> <div style="text-align: center;">  PAN 360° </div> <div style="text-align: center;">  TILT 105° </div> <div style="text-align: center;">  EXTENSIO 0-540mm </div> <div style="text-align: center;">  VERTICAL 0-270mm </div> <div style="text-align: center;">  Wt.Load ≤20kg </div> </div> <div style="display: flex; justify-content: space-around; margin-top: 10px;">     </div>
Drawing	<div style="text-align: center;">   </div> <p style="text-align: center;">EM45136 Product Line Drawing, unit:mm</p>

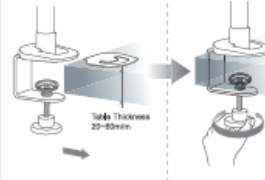
LCD ARM SYSTEM **USER'S MANUAL**

(螢幕支架使用手冊)

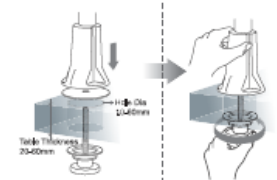
71H016135-015

1 Installation Method of Mount Type (夾座安裝方法)

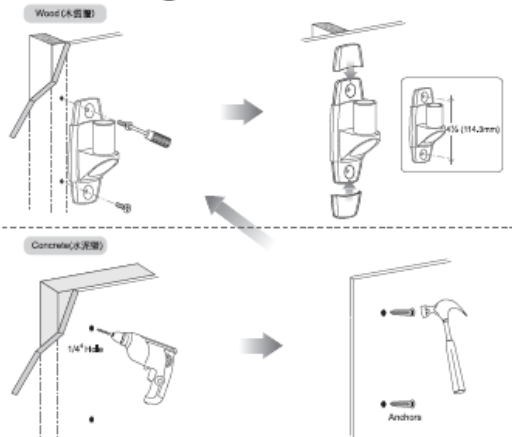
A C-Clamp (C型夾)



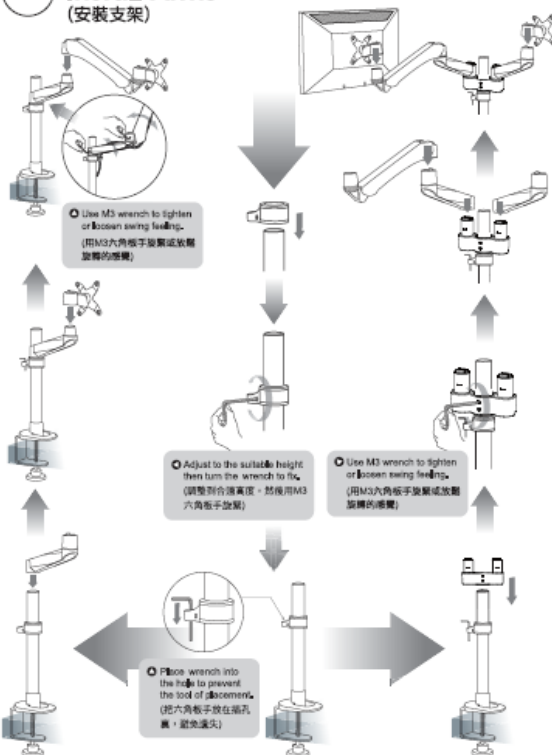
B Grommet (穿桌夾)



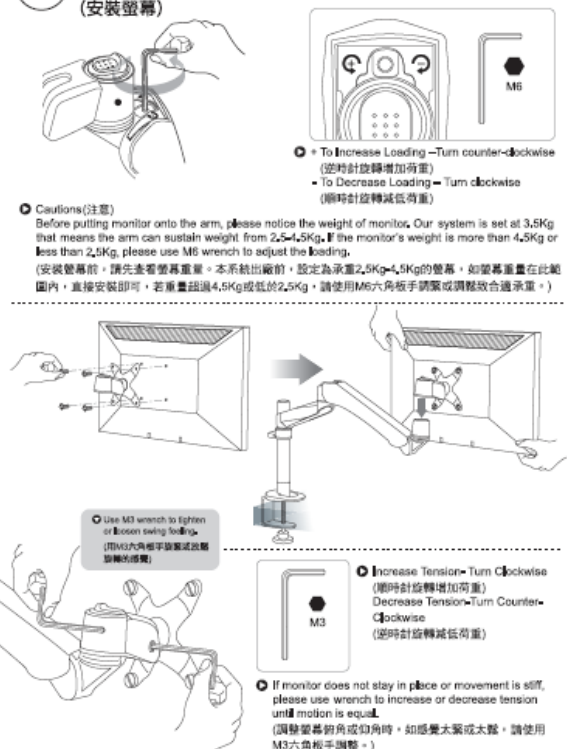
C Wall Mount (壁掛型)



2 Install Arms (安裝支架)

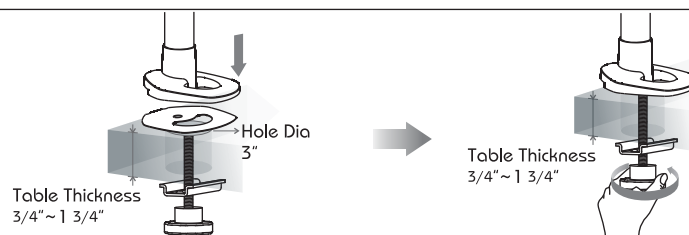


3 Install Monitors (安裝螢幕)



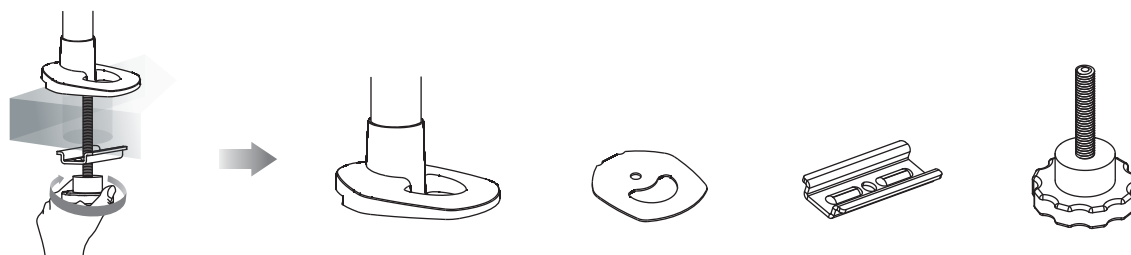
Pole with Clamp/Grommet Attachment User's Manual

Grommet Type

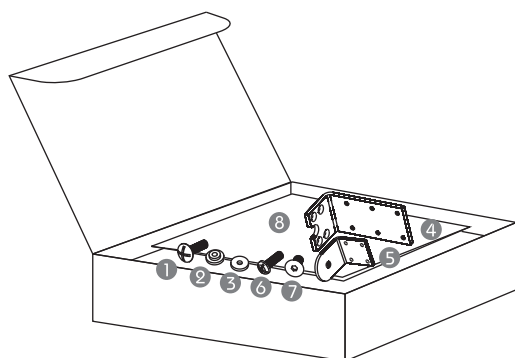


Clamp Type

Step 1 ➔ Unscrew Hand-Turn Screw and separate Hand-Turn Screw and Long Metal Plate from the Mount.

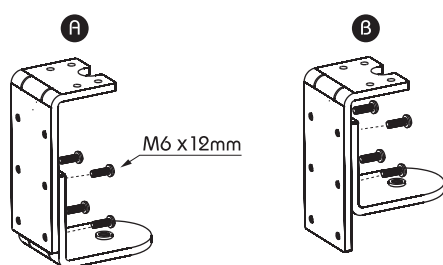


Service Kit



①	Screw M4x15mm, Round Head, Philips Drive	1
②	Male Round Washer	1
③	Female Round Washer	1
④	Metal C Clamp(L)	1
⑤	Metal C Clamp(S)	1
⑥	Screw M6x12mm, Round Head, Philips Drive	4
⑦	Screw M5x14mm, Flat Head, Hex Socket Screw	4
⑧	Pole with Clamp/Grommet Attachment User's Manual	1

Step 2 ➔ Depends on the desk thickness, assemble 2 pieces of metal clamp at suitable screw holes with 4 screws (M5x15mm, round head, Philips Drive).



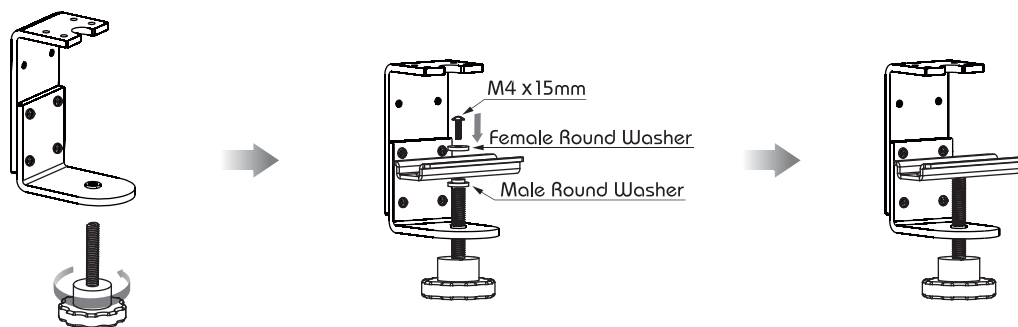
Remark

Desk thickness >50mm(1.97"), refer to chart A left.
Desk thickness <50mm(1.97"), refer to chart B left.

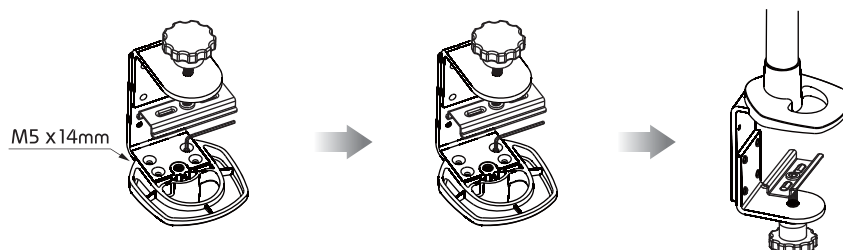
Step 3 ➔ Get Screw (M4x15mm, Round Head, Philips Drive), Male & Female Round Washers from Service Kit.



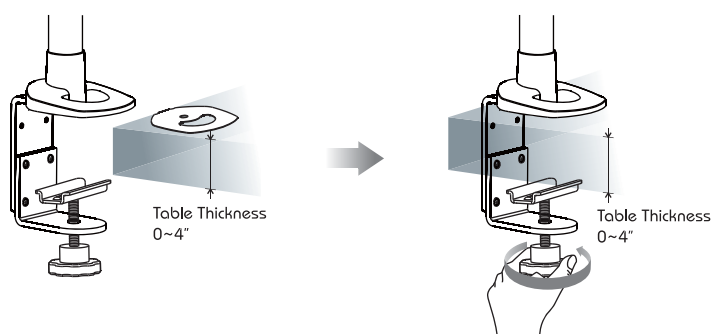
Step 4 Assemble Hand-Turn Screw with C Clamp.



Step 5 Assemble C Clamp with Mount by driving 4 Screws M5x14mm, flap head, Hex Socket Screws.



Step 6 Stick EVA cushion to mount bottom. Mount assembly is completed for installation onto desk.



Step 7 Install Mount with Swivel Arm, Spring Arm, and Monitor Bracket.

Parts & Hardware

Parts	QTY	Remark
Mount with Pole, Pole Cap, and Adjustment Ring	1	No Adjustment Ring on 82mm Clamp Mount
Hand-Turn Screw(Attached with Mount)	1	
EVA Cushion (Attached with Mount)	1	
Long Metal Plate(Attached with Mount)	1	
Screw M4x15mm, Round Head, Philips Drive	1	Inside Service Kit
Male Round Washer	1	Inside Service Kit

Parts	QTY	Remark
Female Round Washer	1	Inside Service Kit
Metal C Clamp(L)	1	Inside Service Kit
Metal C Clamp(S)	1	Inside Service Kit
Screw M6x12mm, Round Head, Philips Drive	4	Inside Service Kit
Screw M5x14mm, Flat Head, Hex Socket Screw	4	Inside Service Kit
Pole with Clamp/Grommet Attachment User's Manual	1	Inside Service Kit

Tool

Tools Item	QTY	Remark
M3 Wrench	1	Inside Service Kit of Monitor Bracket
#3 Philips Screw Driver	1	Provided by users