


# Product Spec. Sheet











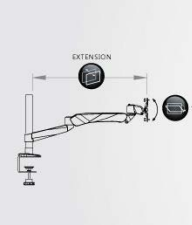
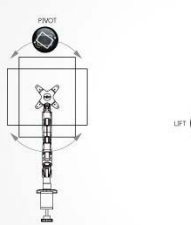
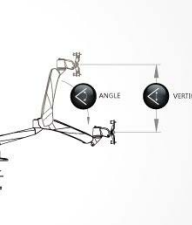

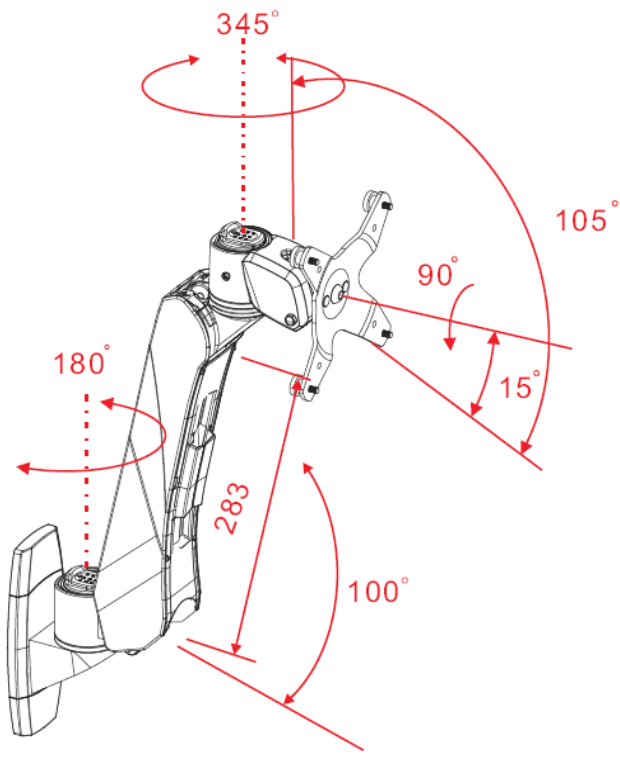
## Diamond Series- Spring Arm

EM34114

Wall Mount LCD Monitor Arm



<b>Product Name</b>	Diamond Series Spring Arm
<b>Model Number (color)</b>	EM34114 (Silver Grey)
<b>Product Includes</b>	Spring Arm, Wall Mount Base Monitor Bracket
<b>Attachment Options</b>	 Lock for Security
<b>Product Dimens.</b>	Product : W120XH430XL270mm Weight : 2.1Kg Color Box : L178*W139*H429 mm Weight : 2.7Kg
<b>Units per Master Carton</b>	6pcs
<b>Shipping Master Carton Dimens.</b>	Carton : L442x W438xH386 mm
<b>Shipping Weight</b>	N.W.:16.2 G.W.:17.2Kg
<b>Units per Pallet</b>	120pcs
<b>Warranty</b>	14 Months
<b>Weight Capacity</b>	2Kg-9Kg (4.4-19.8lbs) almost any VESA compliant monitor up to 30"
<b>Country of Origin</b>	Taiwan

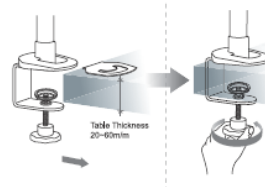
<b>Features</b>	<ol style="list-style-type: none"> <li>1. Elegant, Stylish and Ergonomic design with high performance</li> <li>2. Wide Angle and height range for comfortable view position.</li> <li>3. Swift Movement with easy adjustment.</li> <li>4. 3 quick mode release function as Pivot stand, Swivel or Spring Arm.</li> <li>5. Easily do install and dismount.</li> <li>6. Aluminum alloy and metal material, strong and safety.</li> <li>7. Internal cable management routed cables neatly under arm.</li> <li>8. Space saving.</li> <li>9. A considerate Tool fixed design, no more worrying tool of placement.</li> <li>10. VESA MIS-D 75x75/100x100mm</li> </ol>
<b>Tech Specs</b>	<div style="display: flex; justify-content: space-around; align-items: flex-end;"> <div style="text-align: center;">   VESA  0 </div> <div style="text-align: center;">   LIFT  100° </div> <div style="text-align: center;">   ANGLE  360° </div> <div style="text-align: center;">   PIVOT  180° </div> <div style="text-align: center;">   SWIVEL  240° </div> <div style="text-align: center;">   PAN  105° </div> <div style="text-align: center;">   TILT  0- 330mm </div> <div style="text-align: center;">   EXTENSIO  0-270mm </div> <div style="text-align: center;">   VERTICAL  2-9kg </div> <div style="text-align: center;">   Wt.Load  2-9kg </div> </div> <div style="display: flex; justify-content: space-around; margin-top: 10px;">     </div>
<b>Drawing</b>	 <p style="text-align: center; color: red;">Untis : mm</p>



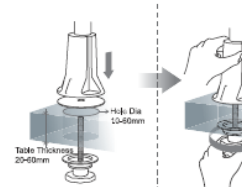
71H016135-015

## 1 Installation Method of Mount Type (夾座安裝方法)

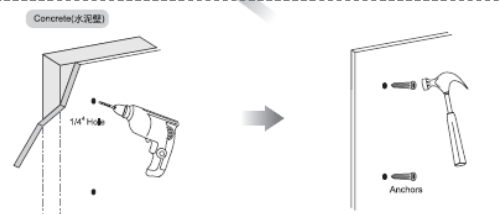
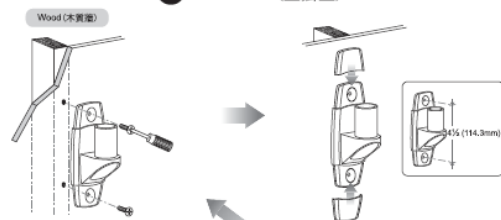
### A C-Clamp (C型夾)



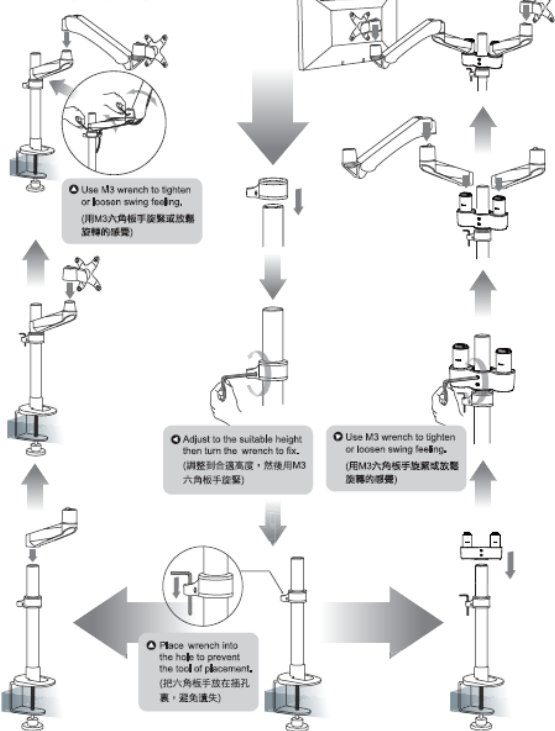
### B Grommet (穿桌夾)



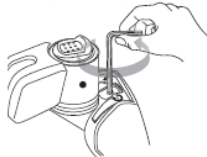
### C Wall Mount (壁掛型)



## 2 Install Arms (安裝支架)



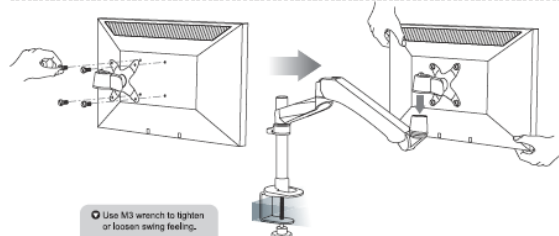
## 3 Install Monitors (安裝螢幕)



- To Increase Loading - Turn counter-clockwise (逆時針旋轉增加荷重)
- To Decrease Loading - Turn clockwise (順時針旋轉減低荷重)

### • Cautions (注意)

Before putting monitor onto the arm, please notice the weight of monitor. Our system is set at 3.5Kg that means the arm can sustain weight from 2.5-4.5Kg. If the monitor's weight is more than 4.5Kg or less than 2.5Kg, please use M6 wrench to adjust the loading.  
(安裝螢幕前，請先查看螢幕重量。本系統出廠前，設定為承重2.5Kg-4.5Kg的螢幕，如螢幕重量在此範圍內，直接安裝即可，若重量超過4.5Kg或低於2.5Kg，請使用M6六角板手調整或調整致合適承重。)



- Increase Tension - Turn Clockwise (順時針旋轉增加荷重)
- Decrease Tension - Turn Counter-clockwise (逆時針旋轉減低荷重)











• If monitor does not stay in place or movement is stiff, please use wrench to increase or decrease tension until motion is equal.  
(調整螢幕俯角或仰角時，如感覺太緊或太鬆，請使用M3六角板手調整。)

### Route Cables (理線)

 **Supplied Parts and Hardwares**  
(包裝內部品及五金件)

[illegible]

## Features and Specification (功能特性)

										
	VISA (75x7510x100)	LIFT (75x7510x100)	ANGLE (75x7510x100)	PISTON (75x7510x100)	SWAYL (75x7510x100)	PAN (75x7510x100)	TILT (75x7510x100)	EXTENSION (75x7510x100)	VERTICAL (75x7510x100)	RELEASE (75x7510x100)
EM31111	MB-0 (75x7510x100)	200mm	0	360°	0	360°	105°	0	0	≦14kg
EM31118	MB-0 (75x7510x100)	200mm	0	360°	0	360°	105°	0	0	≦14kg
EM31138	MB-0 (75x7510x100)	200mm	0	360°	0	360°	105°	0	0	≦14kg
EM31114	MB-0 (75x7510x100)	0	0	360°	0	180°	105°	0	0	≦14kg
EM32111	MB-0 (75x7510x100)	200mm	0	360°	360°	360°	105°	210mm	0	≦14kg
EM32118	MB-0 (75x7510x100)	200mm	0	360°	360°	360°	105°	210mm	0	≦14kg
EM32138	MB-0 (75x7510x100)	200mm	0	360°	360°	360°	105°	210mm	0	≦14kg
EM32114	MB-0 (75x7510x100)	0	0	360°	180°	360°	105°	210mm	0	≦14kg
EM33111	MB-0 (75x7510x100)	200mm	0	360°	360°	360°	105°	420mm	0	≦14kg
EM33118	MB-0 (75x7510x100)	200mm	0	360°	360°	360°	105°	420mm	0	≦14kg
EM33138	MB-0 (75x7510x100)	200mm	0	360°	360°	360°	105°	420mm	0	≦14kg
EM33114	MB-0 (75x7510x100)	0	0	360°	360°	360°	105°	420mm	0	≦14kg
EM34111	MB-0 (75x7510x100)	200mm	100°	360°	360°	240°	105°	330mm	270mm	2~9kg
EM34118	MB-0 (75x7510x100)	200mm	100°	360°	360°	240°	105°	330mm	270mm	2~9kg
EM34138	MB-0 (75x7510x100)	200mm	100°	360°	360°	240°	105°	330mm	270mm	2~9kg
EM34114	MB-0 (75x7510x100)	0	100°	360°	180°	240°	105°	330mm	270mm	2~9kg
EM34211	MB-0 (75x7510x100)	0	100°	360°	360°	240°	105°	330mm	270mm	2~9kg
EM34128	MB-0 (75x7510x100)	0	100°	360°	360°	240°	105°	330mm	270mm	2~9kg
EM34038	MB-0 (75x7510x100)	0	100°	360°	360°	240°	105°	330mm	270mm	2~9kg
EM35111	MB-0 (75x7510x100)	200mm	100°	360°	360°	240°	105°	540mm	270mm	2~9kg
EM35118	MB-0 (75x7510x100)	200mm	100°	360°	360°	240°	105°	540mm	270mm	2~9kg
EM35138	MB-0 (75x7510x100)	200mm	100°	360°	360°	240°	105°	540mm	270mm	2~9kg

1. 客戶滿意是我們致力達到的目標。我們提供優質客戶服務及產品售後服務及關於消費者的權利，請仔細閱讀附於書內的表紙。
2. 對於嚴格服務承諾，讓我們保證及消費者保證及商家保證。
3. 在購買商品時，消費者必須購買已並加貼店標，如不買加貼店標，會造成在保證服務期內無效免責條。
4. 如超過保證期，消費者必須更換零件及修理服務。
5. 對於消費者之投訴問題，以客為本服務，如使用者使用經組產品現性之故障原因，檢成產品受損後，當在保證期內，將不負責任修飾，消費者必須提供零件及修理服務。
1. **Consumer's satisfaction with our products is the goal that we have been heading for. To assure the best after-sale service to consumers and ensure consumer's rights, please read carefully the information stated in the instruction manual.**
2. **To enhance our service efficiency, please provide purchase invoice or warranty card if request for product maintenance or merchandise exchange.**
3. **The actual date of purchase and affixed seal by distributor on warranty card is required. Free after-sale service will not be guaranteed even under warranty period should any incomplete purchase information.**
4. **The costs of components and maintenance will be at consumer's expense should the product is invalid for warranty period.**
5. **Please refer to specification limitation specified in this instruction manual for correct usage. Even under the warranty period, the warranty does not cover any problems or damage resulting from the loading weight that exceeds the specification specified in the instruction manual, and the costs of components and maintenance will be at consumer's expense.**

Please lift arm up to highest position while removing the monitor. The monitor arm could bounce upward to cause personal injury when the weight of monitor is removed.

卸下螢幕時，請將支架移到最上端，因為維持平衡的螢幕重量被移除時，支架會反彈，可能會造成傷害。

